

# USER'S MANUAL



AVR Series Manual (412/812/1612)  
Revision date : Oct-01, 2006

---

# • Contents

## • Chapter 1. Specification & System organization

1. Product Contents List -----	3
2. System Organization -----	4

## • Chapter 2. Product Description

1. AVR-1612 / 812 Front Panel -----	5
2. AVR-1612/812 Rear Panel -----	7
3. AVR-412 Front Panel-----	8
4. AVR-412 Rear Panel -----	9
5. Remote Controller -----	10

## • Chapter 3. Display

1. System Power ON -----	11
2. Screen View Selection -----	12
3. Display Mode -----	12
4. PTZ/FOCUS Control -----	13
5. System Power OFF -----	13

## • Chapter 4. Search

◉ Go to Search Mode -----	14
1. Search by Date/Time -----	14
2. Search by Event -----	15

---

# • INDEX

## • Chapter 5. SETUP

• Go to Menu -----	16
• Go to System Setup -----	16
1. Display -----	17
2. Camera -----	21
3. Sound -----	22
4. System -----	25
5. Event/Sensor -----	30
6. Disk Management -----	31
• Go to Record Menu -----	34
1. Recording Operation -----	34
2. Timer/motion setup -----	35
3. Alarm Record Schedule -----	34
4. Panic setup -----	37
• Go to Archiving -----	38
1. CD-RW and USB Back up -----	38

---

# 1. Specification & Organization

## 1. Product contents List

Please Confirm the Contents When open Package.

### ① Basic Contents



Power Cable



User's Manual



Remote Controller



Remote Client Program Install CD



AAA Battery X 2

### ② Option Contents



HDD



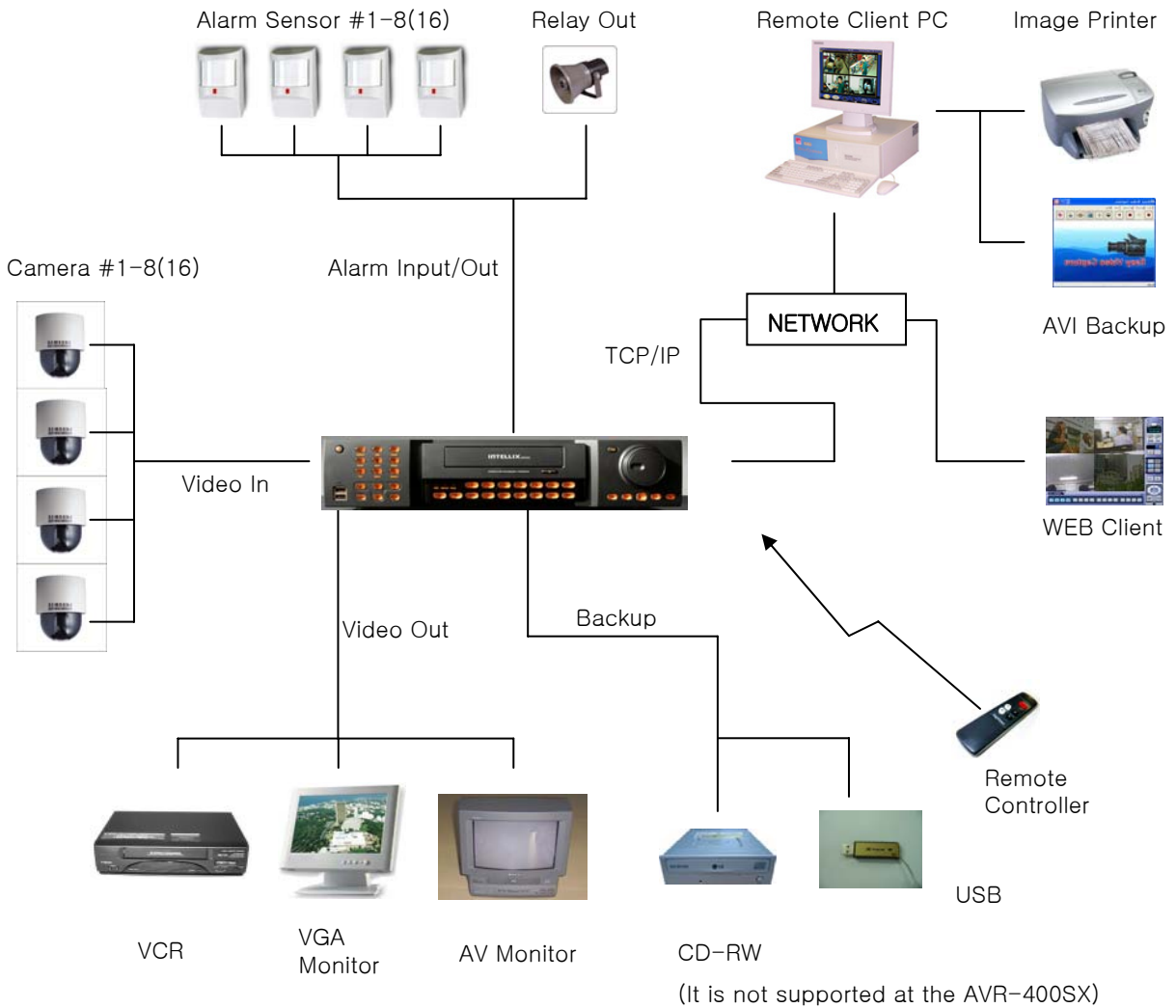
CD-RW



USB Memory

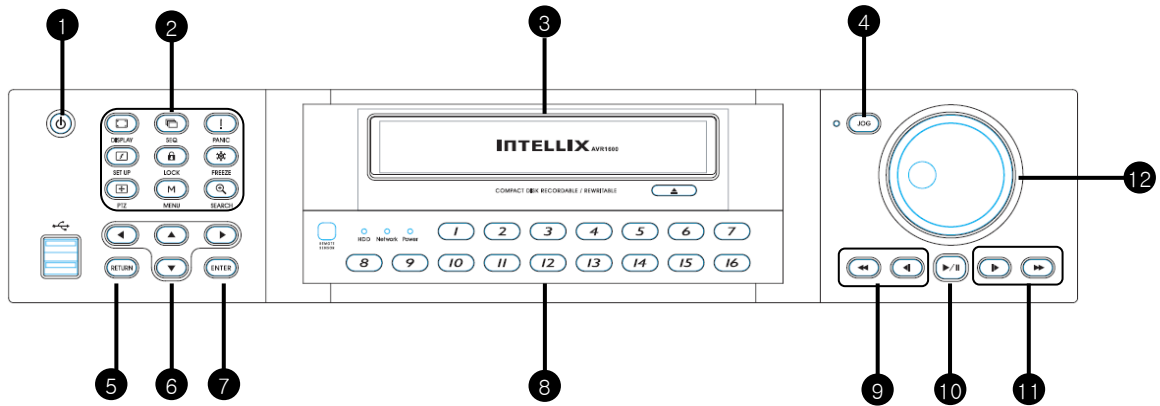
# 1. Specification & Organization

## 2. System Organization



## 2. Description (AVR-812/1612)

### 1. Front Panel



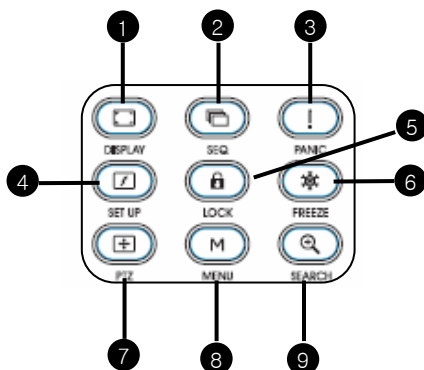
- 1 POWER : System Power On/Off
- 2 SHORTCUT : Shortcut button for convenience.
- 3 CD/DVD RW : Back up image to CD/DVD RW
- 4 HOLD : Hold Current Jog/Shuttle position
- 5 RETURN : Cancel/Deselect/Return to previous screen
- 6 Direction / Navigation Button : UP/DOWN/LEFT/RIGHT
- 7 ENTER : Confirm/ Select next screen
- 8 CHANNEL Select button : Select Channel or Input Password.
- 9 FOCUS : Adjust Focus (Near/ Far) or Reverse Play /Rewind
- 10 PAUSE : Pause playback
- 11 IRIS : Adjust Iris (Open/Close) or Forward Play / Fast forward
- 12 Jog shuttle : Outer wheel – variable REW or FF : Inner wheel – scroll frame – by frame while paused

### Tip

- Channel Selection Button is Prior to DISPLAY.
- When Remote Controller Sensor Input is Blocked by Something, it Cause Remote Controller do NOT Work Properly.
- When Press any Button, it Operate with Beep Sound.

## 2. Description

### \* Shortcut button



❶ DISPLAY : Select Screen Division Mode or Rotation Mode.

❷ SEQ : Select sequence screen mode.

❸ PANIC : Urgent Recording as setup.

❹ ZOOM : Digital zoom on Live or Playback image

❺ LOCK : Front Panel Lock Button (**Default password: 1234**)

When locked, "LOCK" is displayed on screen. Press lock button to unlock.

❻ ARCHIVE : Go to archiving setup menu. (**Default password : 1234**)

❼ PTZ : Go to Camera PTZ Control.

❽ SETUP : Go to System Setup.

❾ SEARCH : Go to Search Mode.

### \* FOCUS / IRIS button



❶ NEAR : Set camera focus (Near & Far) or Reverse Play/Rewind.

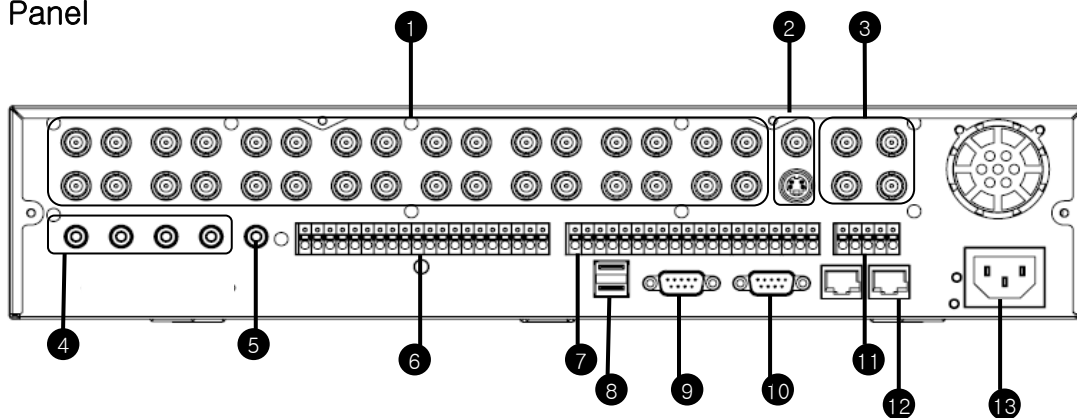
❷ FAR : Set camera focus far.

❸ CLOSE : Close camera iris.

❹ OPEN : Open camera iris.

## 2. Description

### 2. Rear Panel



- ① Video IN / Loop : BNC Video Input Port/ Loop Output (1–8/16)
- ② Monitor out : BNC Main Monitor Output.  
SVHS : S-Video Main Monitor Output.
- ③ Spot #1 ~ #4 : 4x BNC Output to individually – Sequenced Spot Monitors
- ④ Audio In : 4 x RCA Audio Line Input Terminal
- ⑤ Audio Out : RCA Audio Line Out Terminal
- ⑥ Alarm : 8/16 x Input TTL Alarm/Sensor Input Terminal
- ⑦ Relay : 8/16 x Relay Output Terminal
- ⑧ USB : USB port for use the USB memory stick and USB HDD Backup.
- ⑨ VGA OUT : VGA Main Monitor Output (to a computer Monitor)
- ⑩ RS-232C : Serial Configuration Port for Program Debugging.
- ⑪ RS-485 : Serial Interface for PTZ device connection and control
- ⑫ Ethernet (TCP/IP) : 10/ 100 Ethernet LAN/WAN connection (for Remote Access and configuration)
- ⑬ POWER : Power Cable connection.

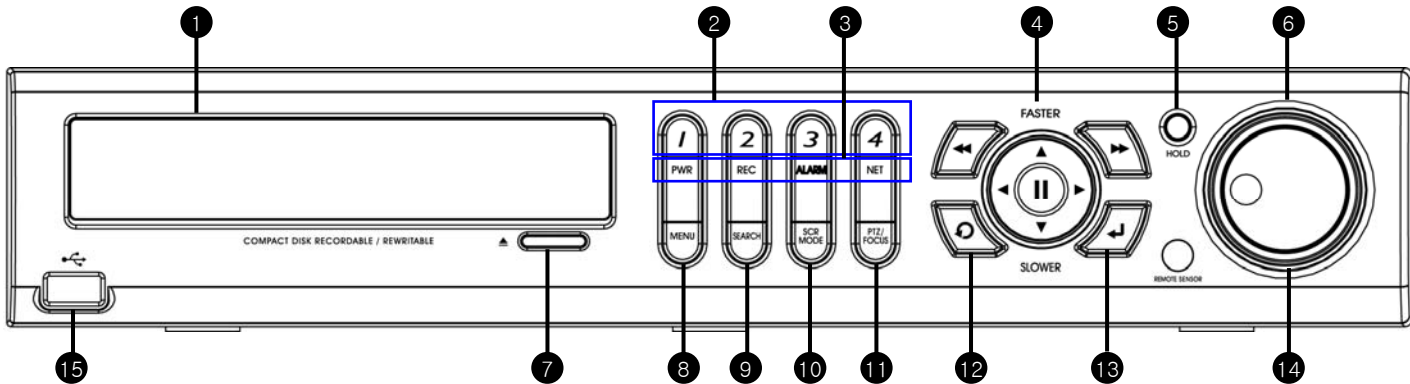
### Tip

- Do not power on the unit all cable connections have been made.



## 2. Description (AVR-412)

### 1. Front Panel



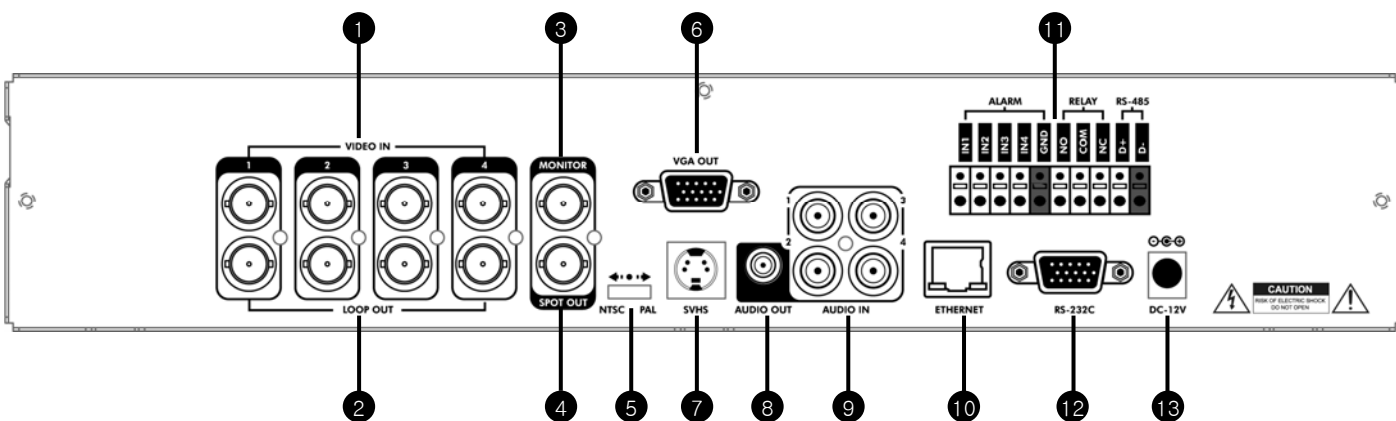
- ❶ CD-RW : CD-RW Device for Backup.
- ❷ Channel Selection Button : Select Channel or Input Password.
- ❸ Led Indicator : Indicate Present System Status Information.  
( PWR: System On/Off, REC: Record On/Off,  
ALARM: Alarm Sensor Detection Status, NET: Client Network Connection Status, )
- ❹ Search Controller : Searching Recorded Data or Control Menu & PTZ/FOCUS.
- ❺ HOLD : Hold Jog dial.
- ❻ JOG dial
- ❼ Eject : Eject CD
- ❽ MENU : Go to System Menu.
- ❾ SEARCH : Go to Search Mode for Searching Data.
- ❿ SCR MODE : Select Screen Division Mode or Rotation Mode.
- ⓫ PTZ/FOCUS : Go to Camera PTZ/FOCUS Control.
- ⓬ RETURN : Cancel Setup or Return to Previous Mode.
- ⓭ ENTER : Apply Changing Setup.
- ⓮ Remote Controller Sensor Input.
- ⓯ USB Port: USB port for use the USB memory stick and USB HDD Backup

### Tip

- Power Button is Soft Style to Prevent System Failure by Wrong Operation.
- Channel Selection Button is Prior to SCR Mode.
- When Remote Controller Sensor Input is Blocked by Something, it Cause Remote Controller do NOT Work Properly.
- When Press any Button, it Operate with Beep Sound.
- In Case of CD-RW, the Real Appearance will be Differ from the above Picture  
↳ Depends on its Model.

## 2. Description

### 2. Rear Panel



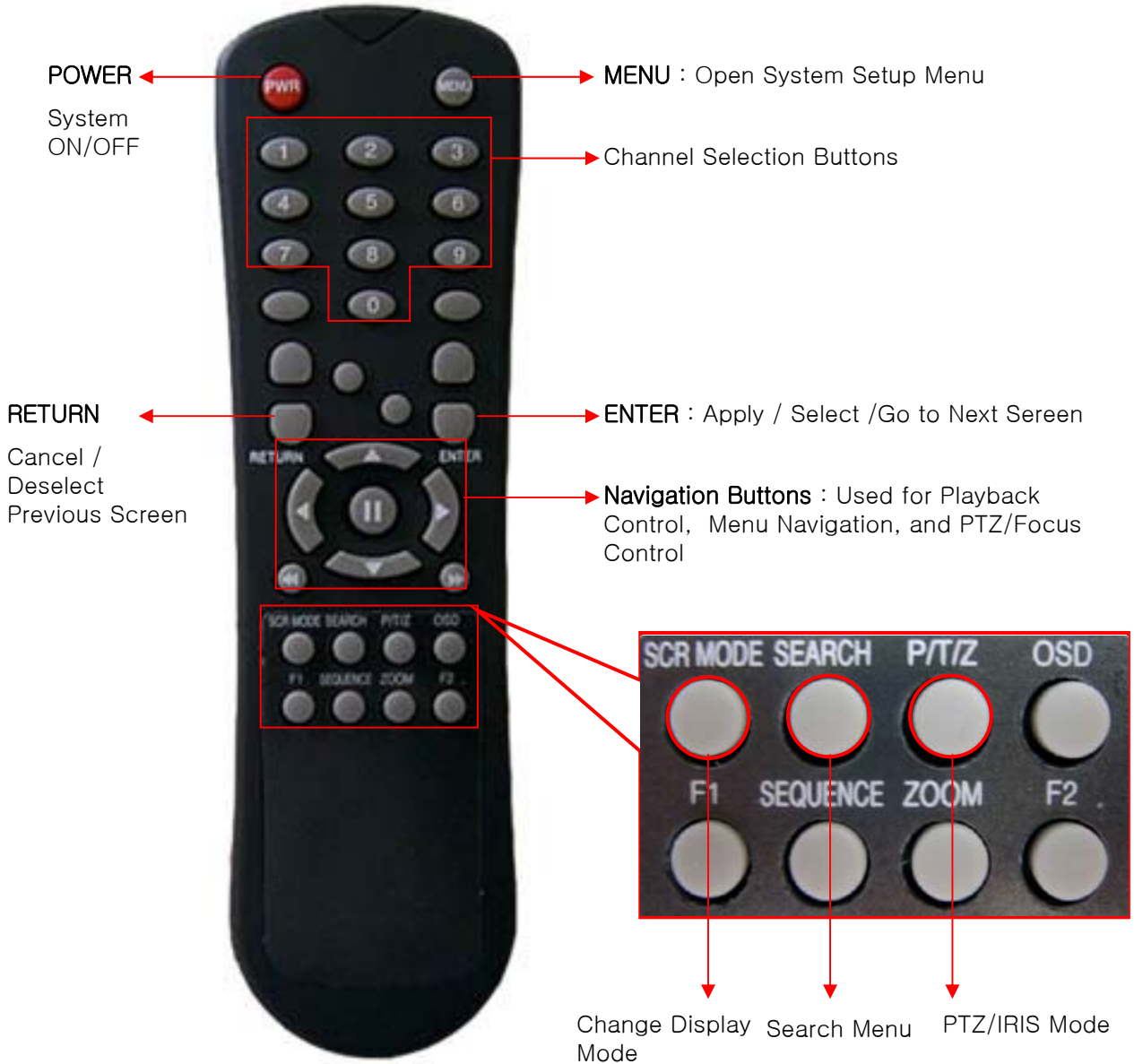
- ❶ Video In : BNC Port for Connection of DVR & Camera. (4 Camera Connectable)
- ❷ Loop Back : Output DVR Camera Video to Loop Back Port. (4 BNC Port)
- ❸ Monitor Out : Output DVR Video to AV Monitor.
- ❹ Spot Out : Output Spot-out Video to AV Monitor.
- ❺ NTSC/PAL : Select NTSC or PAL Type.
- ❻ VGA OUT : Output Video to a Computer Monitor by Connected VGA (Option)
- ❼ SVHS : Output Video by Connected SVHS.
- ❽ Audio Out : Output Audio Data.
- ❾ Audio In : Audio Input Terminal Related with #1~4 Camera.
- ❿ Ethernet (TCP/IP) : Port for Cross cable. (Possible to Remote Surveillance.)
- ⓫ Alarm/Relay/RS-485 : Connect Port for Sensor, Relay, & PTZ.
- ⓬ RS-232C : Connect Port for Program Debug.
- ⓭ DC Power Input : Power Supply by DC 12V Adaptor.

### Tip

- When System Installation, Please Install under System Power Off Status.
- Please Use Specific Adaptor when Power Supply.

## 2. Description

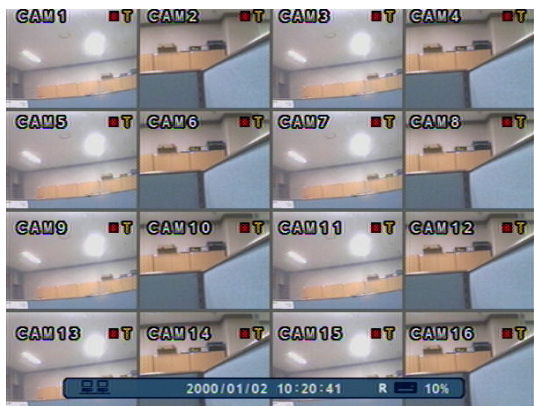
### 3. Remote Controller



- There are buttons on the controller that are unused, and their descriptions have been omitted.
- Every Button on the controller will function the same as its corresponding button on the Front Panel
- Remote Controller will only work when used within line-of-sight of the IR remote sensor on the DVR.
- ※ If there are many DVRs within line-of-sight of the controller, they will all respond to the controller.

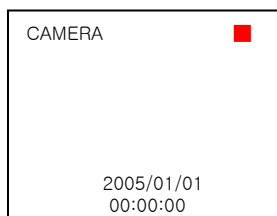
## 3. Display

### 1. System Power ON



- Press power button to start system.
- After Checking Hard Disk, display mode is shown.
- Initial Screen View Mode is Quad Division Mode and Recording Mode.

<Picture of Power On after Finishing Installation>

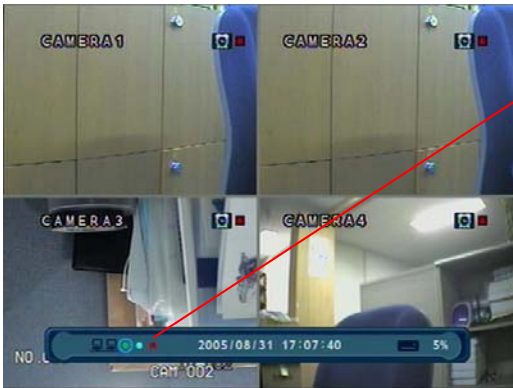


- Each Channel Indicates Camera Name & Recording Status.
- Present Time & Date shown on Status Bar at a bottom of screen.

#### Tip

- Check System status LEDs
  - Power : Indicates System (On/Off)
  - Record : Indicates Recording (On/Off)
  - Network : Indicates Network/LAN Client connection Status

## 3. Display



When this unit is connected with a remote client PC, a Network status icon will appear on the Status Bar

- This icon indicates the current network conditions
  - Green: Network is connected and stable.
  - Blue: Network is connected, but is unstable.
  - Red: Network is very unstable.

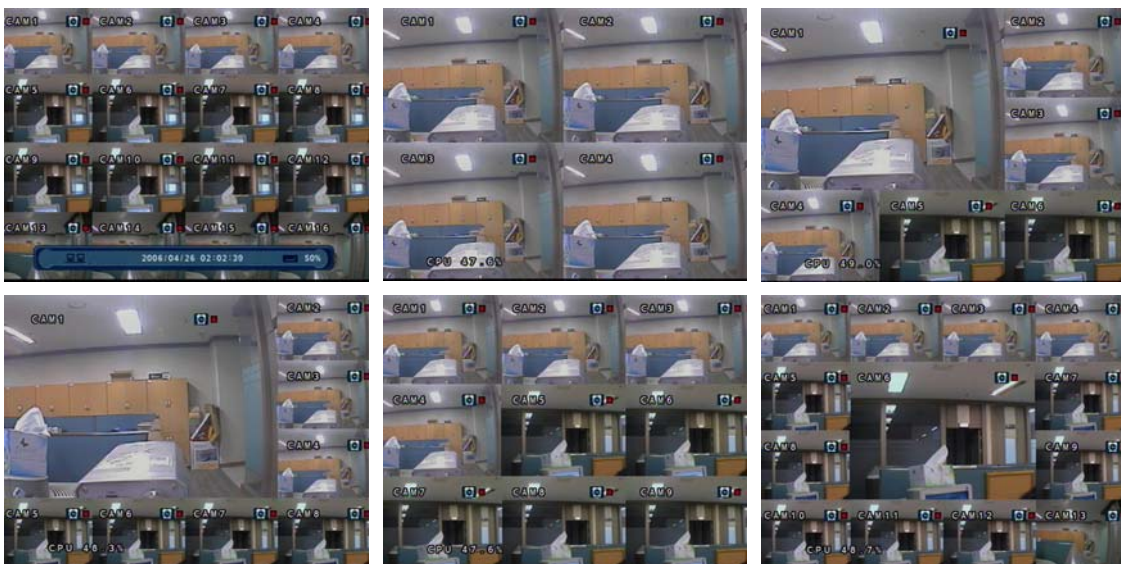
## 2. Screen View Selection



- Select One Channel using the channel selection buttons (1–8/16).
- Use the display button to change the multi-channel Display mode.
- Press channel selection button twice to view the channel on full screen.

## 3. Display Mode

- User can select from a variety of multi-screen display modes (1/4/6/8/9/13/16ch)
- The initial display mode is set to either 8ch or 16ch mode.



## 3. Display

### 4. PTZ/FOCUS Control

- Control Camera Movement of PTZ (Pan/Tilt/Zoom) devices.
- Press PTZ Button to switch into PTZ mode. (Status Bar is replaced by PTZ controls)



- Each PTZ function is manipulated by using a button on the Front Panel or on the Remote controller.
- Some of the notations on the PTZ menu are abbreviated. (P: Pan, T: Tilt, Z: Zoom, F: Focus, I: Iris)
- All of the functions on the PTZ menu are labeled along with the Front Panel/ Controller button that control it.

### 5. System Power Off



- Press power button to power system off.
- Input password and press enter to shutdown system.
- Don't disconnect AC power without completing shutdown.

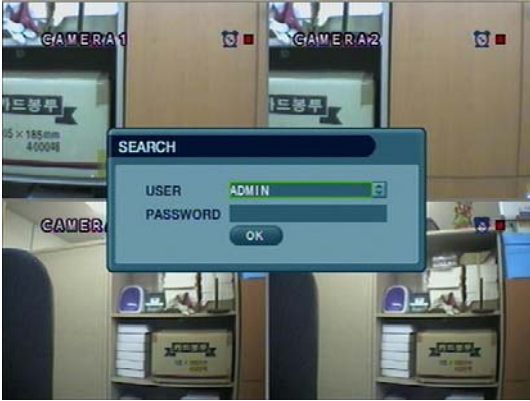
#### Tip

- System Log-On User Account Types are 'Administrator', 'Manager', 'User'  
Administrator: Access All Function (Power On, Shutdown, Setup, Search, Backup)  
Manager: System Power On, Live View, Search, Playback  
User: System Power on and Live View



## 4. Search

### ① Go to Search Mode



- Press search button and Log-In.  
(as administrator or manager )
- Use directional keys to navigate search menu.
- To open/ advance each sub menu, Press enter
- To return to a previous menu screen, Press return.  
( Repeatedly pressing return will exit out of all menus.)

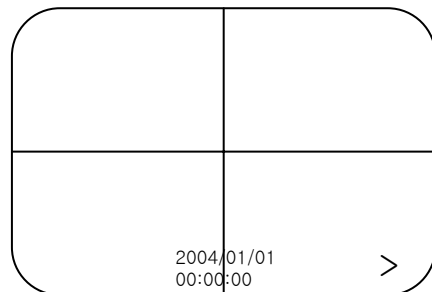
### 1. Search by Time

– Search by a recorded Date/ Time










- ① Move cursor to select the date on the calendar.
- ② Press enter to open selected date.
- ③ Recorded timeline will appear.
- ④ Move cursor to the specific time, and press enter.  
(The timeline is divided into 15 minutes segments)
- ⑤ Menu will be hidden from view, and playback will start playing from the selected date/ time forward.

- The recorded date & time is shown on the status bar.
- The current playback mode (Play, Pause, FF, REW) is indicated with an icon on the bottom-right of the screen.
- The channel selection and display buttons will work the same as in live view mode, setup, PTZ and archiving buttons don't work in the playback mode.



# 4. Search

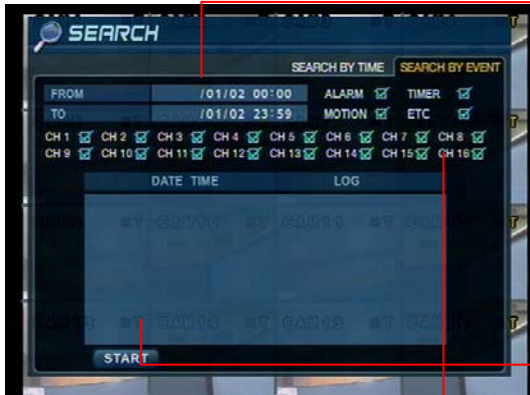
## • Video Playback Controls

- ①  : Basic playback mode (Normal speed (1X) forward playing)
- ②  : Normal speed (1x) backward playing
- ③  : Pause playback (Enable the JOG wheel)
- ④  : Fast forward (2x ~ 64x speed)
- ⑤  : Fast rewind (2x ~ 64x speed)
  
- ⑥  : Variable FF/REW Speed, same as # ④ ⑤  


※ Use JOG or press normal forward/backward button while paused, to advance previous/next frame.

## 2. Search by Event

– Search Video with based on alarm/sensor events, motion recording events and system events



Select start date & end date of the event search.

Alarm : Search alarm/sensor events within the selected date/time period.

Motion : Search for motion recording events within the selected period

Timer : Search for schedule change or recording setup change events with the selected period.

System : Search for power on/off events or other system events within the selected period

Event search results display in the lower window

Channel selection : choose the channels to search

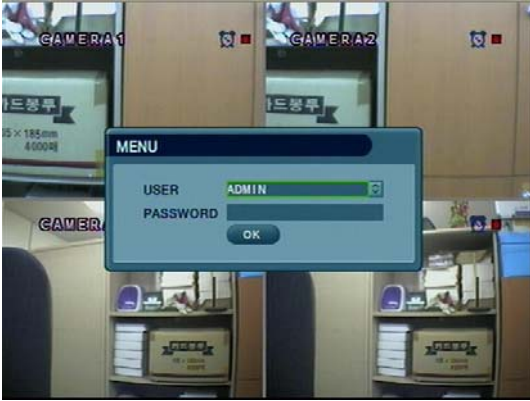
### Tip

- Alarm, Motion, System can be selected at the same time by checking the checkbox next to each of the desired options (V)-(ENTER)
- To change Date/ Time selection, Press enter and use the directional keys to Increase or decrease the value. When desired value is set, Press enter.



## 5. Setup

### Go to setup

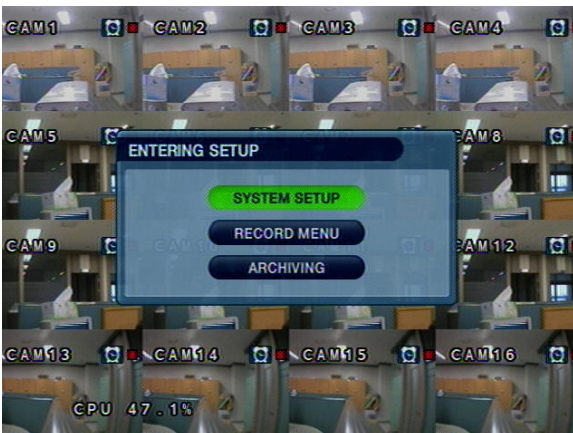


- ① Press setup button.
- ② Unit will ask for login/password Entry.
- ③ Input password using by channel selection button.
- ④ After login, select a submenu and press enter.

### Tip

- The Initial password for the Admin account is 1234.
- On-Screen display will show the password digit as : \*\*\*\*
- To set up or edit user accounts, or Login/ Password information, go to System setup→System → User management submenu.
- You may only enter into the setup menu from live view mode.

### Go to System setup



- Choose “ System Setup” to enter into the setup menu.

## 5. Setup

### 1. Display

– Allows configuration of display properties



- Live view display options are edited within this submenu.



- Navigate menu by using directional buttons



- Select the desired menu category and press “Enter”




- Return to previous menu (or live view mode)

#### 1-1. OSD



#### Tip

- When have finished changing settings, Press  to confirm the changes.

- Status Bar : Recording mode icon (on/off), (Recording: Red, Pre-recording : Green)
- Camera Title: Show/Hide camera name (on/off).
- Event Icon: Show/Hide event icon (on/off).
- Border : Show/Hide border Grid (on/off) in multi-channel mode.
- Border Color : Select color of border Grid. (White, Blue, Red, Yellow, Green, Gray)
- Menu transparency : Setup menu transparency.
- Motion Sensor : Toggle Motion Detection (Off/Active / Inactive)
  - Active : Display motion sensor of motion detection area.
  - Inactive : Display motion sensor except motion detection area.
  - Off : No display of motion sensor.
- Motion sensor color : Setup motion sensor color.
- Motion transparency : Setup motion transparency.

## 5. Setup

### 1-2. MONITOR



- Sequence dwell : Set up channel sequence cycle time (1-60 sec).
- Spot-out dwell : Setup spot-out time cycle(1~60 sec.).
- De-interlace mode : Remove interlacing in high resolution & low frame.  
\* This applies only D1 resolution. (704X480)
- Alarm pop-up mode: alarm channel will go full screen on activation.
- Alarm pop-up dwell: alarm pop-up time (1~60sec.)
- Motion pop-up mode : motion channel will go full screen on activation.
- Motion pop-up dwell : motion pop-up time(1~60sec.)
- Display mode : select display mode. (VGA/AV)

# 5. Setup

## 1-3. SEQUENCE



- Activation : Setup activation on/off.
- List : Sequence title.
- Created by user who programmed the sequence.

- Choose add to add sequence.
- Input the sequence title.
- Choose activation. (on/off)
- Save and exit

### \* How to setup Sequence function



① Press Enter, then red border line will disappear. Setup mode will be activated.

② Select display mode type for sequence via navigation key.

③ Input channel No. for sequence function via virtual keyboard.



④ User will add up new sequence type as different type

⑤ Press return button after finishing setup, Finally, select Save & Exit / Exit / Cancel

⑥ User can check sequence function by pressing sequence button of key pad.

## 5. Setup

### 1-4. SPOT OUT



- Channel : Select spot out channel (4CH=> 1 SPOT, 8CH=> 2 SPOT, 16CH=> 4 SPOT)
- Select camera channel for spot out
- User can see the selected channel via AV monitor



# 5. Setup

## 2. Camera

- Allow setup of camera Parameters and Options

### 2-1. Camera Title

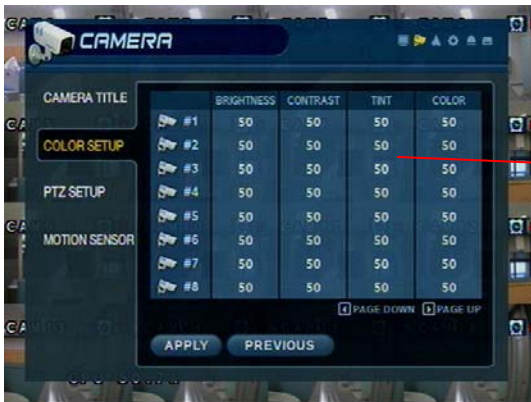


- Covert : Setup channel as Covert channel (on/off)  
=> What's Covert?  
When a channel is set to covert, it will be hidden Live view and Playback, but video will still be recorded.
- Title : User will input camera name by using virtual key board.



- Use the enter button to click the keyboard.

### 2-2. Color Setup

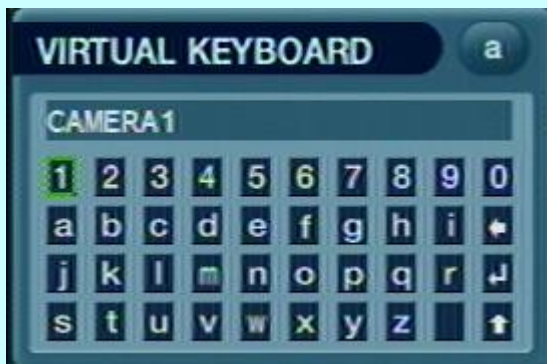



- Adjust the brightness, contrast, color and tint of each channel
- All values range from 0-100 (all values are 50 by default)
- User need to set these values on each channel individually.

## 5. Setup

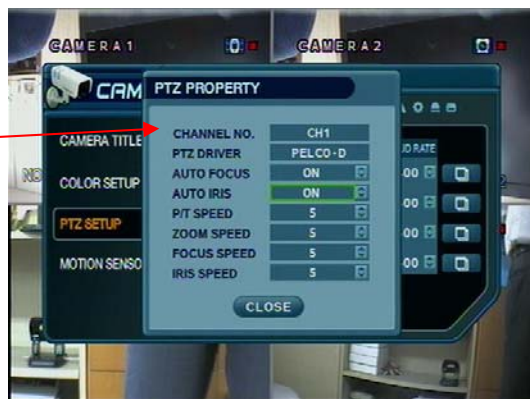
### Tip

※ How to use Virtual Keyboard

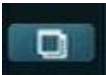


- Input the directional buttons to select keys on the virtual keyboard.
- Press enter to press a key on the keyboard.
- Press the  button for shift for CAPS and punctuation.

### 2-3. PTZ Setup



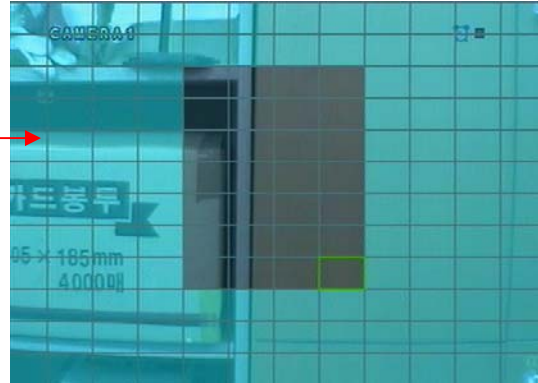
- Address : Select the PTZ Camera Address (0-255).
- PTZ Protocol : Select type of PTZ Camera.
- Baud Rate : Setup PTZ Communication Speed.  
(2400, 4800, 9600, 19200, 38400 BPS)

- Enter  button and setup the PTZ details.

※ PTZ Supplied Protocol : Samsung(MRX-1000), Samsung(SCC641), Honeywell(SD1)  
Honeywell((GMC), Lilin(Fastdome), Fastrax(II), GC(655N),  
D-MAX, Sunin DSC-230, Scan Dome-II, Vicon, Philips8560-700  
Sensormatic, Panasonic(WV-CS850), Panasonic(WV-CSR604), VRX-2101  
Kalatel(KTD-312), PELCO-D, PELCO-P, Dynacolor(D7722)

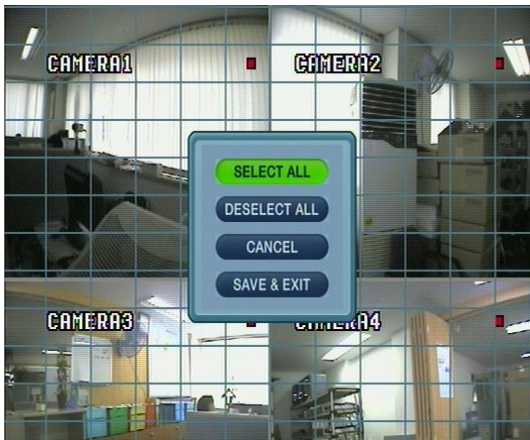
## 5. Setup

### 2-4. Motion Detection



- Adjust the Motion Sensitivity Level (1-10)
- Click area setup to define motion-sensitive area.
- Area is selected on a 16 x 16 target grid. (The entire viewing area is selected on all channels by default)

- Move cursor over grid using the Directional keys.
- Press Enter, and then use the Directional Keys to select an area of targets on the grid.
- Press Enter again to mark the selected area.  
( An area that is already marked will be unmarked)



- Press Return key to step back out of Area Setup
- Select All : Select entire area for Motion sensitivity.
- Deselect All : De-Select entire area
- Cancel : Cancel changes to setup & exit.
- Save & Exit : Save the changes & Exit.



---

## 5. Setup

### 3. Sound

#### 3-1. Audio

– Allows for configuration of audio parameters and options



- Live Audio : Audio output to audio out terminal (ON/OFF).  
(Live audio output is from audio in terminal)
- Audio Monitoring Channel: Select channel for audio output.
- Network Audio TX: Allow transmission of live audio over network
- Network Audio RX: Allow reception of audio talkback from PC.

#### 3-2. Buzzer

– System Buzzer Setup



- Keypad : Buzzer will chirp when button is pressed on Front Panel.
- Remoe con : Buzzer will chirp when button is pressed on Controller.

## 5. Setup

### 4. System

– Basic System environment Setup

#### 4-1. Date/Time



※ User should set the proper Time zone for your geographic location before adjusting the other settings.

- Date time : Set the present date & time.
- Date Format : Select the style of date display. (Ex: 2005-00-00, 2005/00/00)
- Time Format : Setup time display as either 12 Hour or 24 Hour base.
- Network time server : Setup on NTP time server, to synchronize date/Time with other devices on the network
- D.S.T: Daylight Saving Function (On/Off).



- Time Zone Setup : Choose the time zone (Relative to GMT standard).

### Tip

※ How to perform Date/Time setup via network (NTP) time server ;

1. Setup Time zone for your geographic location.
2. Setup the Network Time server information and press the “ Sync” button.
3. If correct time is not retrieved automatically, set the date/time manually.
4. If the correct date/time is not set, you may experience problems when using Date/Time search.

## 5. Setup

### 4-2. Network



- IP Address : Input the unit IP Address.
- Gateway : Input the IP address of Internet-connected Router
- Subnet Mask : Input the Subnet Mask IP.
- DNS Server: Input 1<sup>ST</sup> AND 2<sup>ND</sup> DNS Server IP Addresses.
- DDNS Server: Input DDNS server IP address
- Net Client Port : Input net client Service Port # (Default:6100)
- Web Server Port : Input the Web server port # (Default: 80)
- Max TX Speed : Setup Max Network TX Speed. (56k – 8mbbs)  
\*\* After making changes to the Network setup, click Apply.  
(The system will prompt you to reboot in order to save change.)

- DHCP (Dynamic Host Configuration Protocol) : IP address is set on the DVR automatically by DHCP server/router.

1. Set DHCP setting (On/Off)
2. DHCP Off : User will input IP address manually.
3. DHCP On : IP address will be assigned automatically. After DHCP is set to On, the system will reboot.
4. After the system has restarted, you can view the new IP address from this menu or in ' System information'

- DDNS (Dynamic DNS): This is used with a Dynamic IP address, which may be changed by the ISP at any time.  
※ With DDNS, there is no need to enter the IP address on every connection, A name server address is used instead of.

1. Setup DHCP to on or manually input the unit IP address.
2. Setup DDNS to On, set the DDNS properties (user name, password, and domain name) and reboot the system.
3. To access the DVR using the name server address, the format for the address is :  
http:// [user name].[domain]  
([Example: http:// mydvr.dyndns.org] (user name: mydvr.domain: dyndns.org)
4. User will need to input all of the correct DDNS information into the Network setup in order for the DVR to be able to update its new IP address to the DDNS server whenever a change occurs.
5. If user is using a router in your network configuration, it is the router which must be setup for DDNS, not the DVR.

#### • ※ About Network Configuration

1. If your DVR is connected to the Internet via a Router, you must use Port Forwarding in order for users outside of your Local Area Network (LAN) to access the DVR remotely over the Internet.
2. Forward the Web and Client Service Port #'s to the Private (LAN) IP Address of the DVR.
3. The Router and DVR must have IP Addresses that are located on the same network subnet.  
Example: Router IP: 192.168.0.1 DVR IP: 192.168.0.x (x is any number from 2 ~ 254)
4. Users connect to the DVR over the Internet using the Router's Public (WAN) IP Address.
5. If the Port Forwarding settings are correct in the Router, it will forward all data to/from the DVR.
6. If the DVR is the only device using your Internet Connection, it will be assigned the Public (WAN) IP Address that is given to you by your Internet Service Provider (ISP).

## Tip

## 5. Setup

### 4-3. Mail



These settings allow the DVR to send outgoing E-mail notifications to the list of recipients listed within the DVR

- Server: Setup the outgoing Mail server address.
- Input the server address using the Virtual Keyboard.
- Port: Mail server port number (default is port 25).
- Security: For a mail server the requires outgoing SMTP Authorization (On/Off).
- User & password: Input the username and password (if required for outgoing SMTP Authorization).

## 5. Setup

### 4-4. User Management



#### DVR User account Setup

- There are 3 groups of User Account types
  - Administrator, Manager, and User.
- A Total 7 users can be established for each account type.



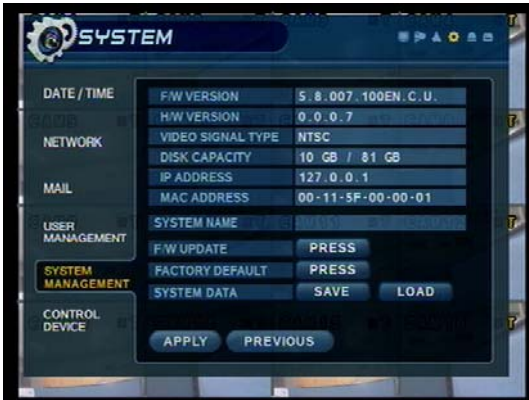
- Input the new User ID,
- Input a password, using channel selection buttons (0-9)
- Choose the Group which the user belongs to.
- Input the E-mail Address for the new user.
- Turn E-mail notification (on/off)



- Input User ID and E-mail address using the Virtual Keyboard.

## 5. Setup

### 4-5. System Management



- F/W version: DVR Server firmware version.
- H/W version : DVR Hardware version.
- Video signal type: NTSC or PAL.
- Disk capacity: Used HDD capacity/ total HDD capacity.
- IP address: Current IP address of the DVR.
- MAC address: Fixed MAC address of the DVR.



- F/W update
  - User can do F/W update by USB (or CD) device.
  - Press 'Press'
  - Select F/W from the list.
  - Press 'START'



- Factory default
  - User can initialize all setup but recording data is not erased.
  - Press 'Press' then warning message appear.
  - Press 'OK', then all setup initialized.

- System data
  - User can save/load settings.
  - Press 'SAVE' to save current setup without message.
  - Press 'LOAD' to load saved setup from USB device without message.



## 5. Setup

### 4-6. Control device



- System ID : Select system ID. (1~254)
- Protocol : Select protocol.
- Baud rate : Setup baud rate.

## 5. Event/Sensor

### 5-1. HDD Event



- Drive: All HDDs are listed by IDE channel Number.
- Smart alarm: Set Temperature Alarm (on/off)
- Check interval: Time between smart alarm checks.

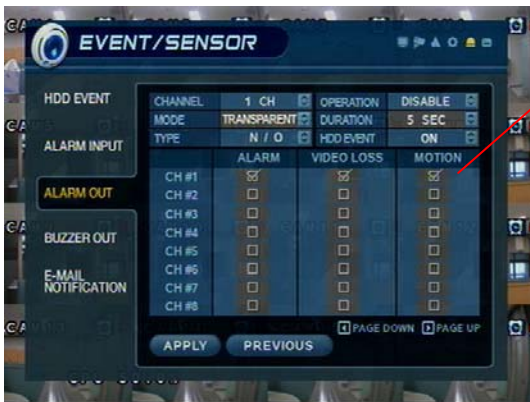
## 5. Setup

### 5-2. Alarm Input



- Operation: Setup Alarm Sensor Connection Status. (enable/disable)
- Type : Setup Alarm Sensor N/Open, N/Close Type.
- Normal Open : Open status in normal times, when alarm out happen changed to close status .
- Normal Close : Close status in normal times, when alarm out happen changed to open status .
- Page down/up : Move display page.

### 5-3. Alarm Output



- ※ Setup each channel when alarm, video loss, motion happened.
- Channel : Select Channel.
- Mode: Setup Reacted Relay as Latched/Transparent Mode.
- Type: Setup Relay Type N/Open or N/Close.
- Operation: Setup Relay Connect with Alarm Sensor.
- Duration: Setup Reacted Relay Time. (5sec~5min or Until key-in)
- HDD Event: Alarm On/Off when HDD has the problem.
- Page down/up : Move display page.

### Tip

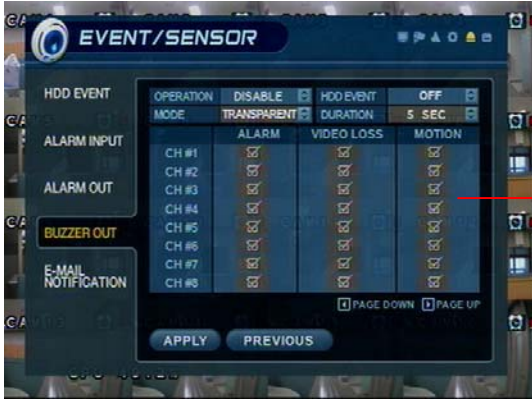
- Latched/Transparent

Latched – When sensor alarm activated, relay reacted in setup duration.  
Transparent – Relay reacted temporary during sensor alarm activate.



## 5. Setup

### 5-4. Buzzer out



- Operation: Buzzer Out (Enable/Disable).
- Mode: Setup in Latched/Transparent Mode (same as Alarm out).
- HDD Event: Turn buzzer (on/off) when HDD event occurs.
- Duration: Buzzer time (5sec~5min or manual reset on DVR)
- Setup each channel to trigger buzzer on alarm activation, video loss, and/or motion event.

## 5. Setup

### 5-5. E-mail Notification



- E-Mail Notification will send an e-mail to a list of recipients, based on alarm, video loss, motion, or HDD events.
- Check or uncheck each type of condition that you want to trigger an E-mail notification, on each channel.
- The list of recipients is configured within the System → User Management menu.
- Make sure that all of the outgoing mail server settings are correct, within the system → Mail menu, in order to ensure delivery.

## 6. Disk Management

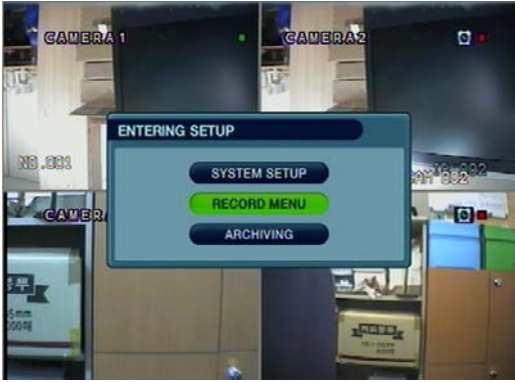


- Disk Overwrite : (ON/OFF) overwrite permission (when HDD is full)
  - ON: Overwrite HDD, starting with the oldest data first (also known as FIFO – first in, first out)
  - OFF: When HDD is full, recording will be halted and the system buzzer will activate
- Format : (Click START to Format HDD). All Recorded data will be deleted from the HDD.

[NOTE: Any newly-installed HDDs will be detected during the Power-On Self Test (POST), and the system will prompt you to Format the new HDD before entering into the DVR system GUI. You can't format new HDDs from the disk management menu, until they have been formatted first during the startup sequence.]

## 5. Setup

### Go to Record Menu



- Press the setup button and login as an Administrator.
- Choose “ Record Menu”

### 1. Recording Operations



- Schedule Mode: Choose 'DAILY' or 'WEEKLY'.
  - Daily : The recording schedule that you configure will be used for every day of the week.
  - Weekly: You must configure the recording schedule for each day of the week, individually.
- Pre-Event recording time : (1 ~ 5 seconds) data will be recorded to the HDD from 1 to 5 seconds before an event is detected.
- Post-Event Recording Time : (5 sec ~ 3 min) Data will be recorded to the HDD from 5 seconds to 3 minutes after an event has ended.

# 5. Setup

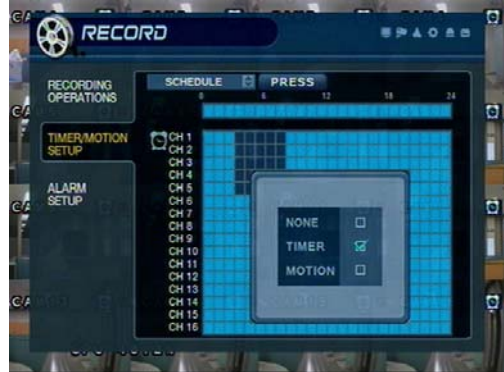
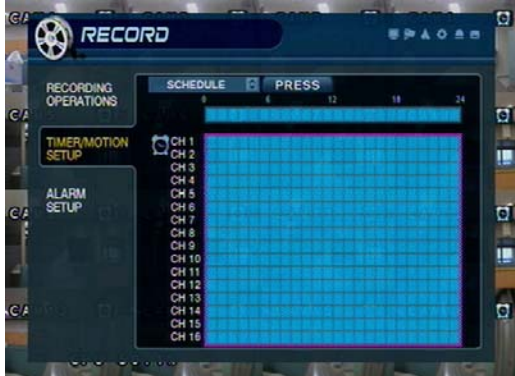
## 2. Continuous / Motion Record Schedule

### 2-1. Parameter



- Select a block of time from the 0–24hr Timeline (you may select multiple blocks).
- Press ENTER again to set up the Resolution, FPS, Quality, and Audio on each channel.

### 2-2. Schedule



• Continuous recording Icon



• Motion recording Icon

• Select an area (channel / time of day) on the schedule grid and press enter to adjust its properties.

• Set area as 'Timer' (Continuous), 'Motion', or None.

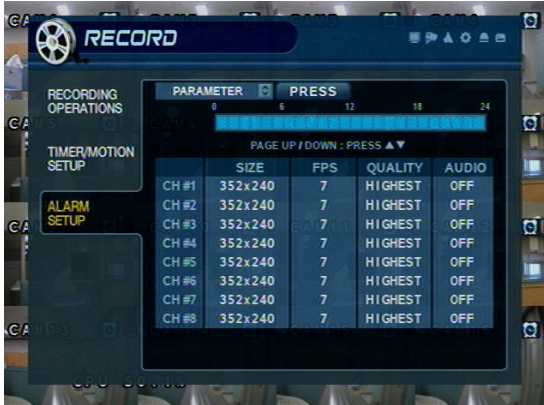
• If 'WEEKLY' recording is enabled, you must set up each day of the week individually.

• If 'DAILY' recording is enabled, you will set up one schedule for every day of the week.

# 5. Setup

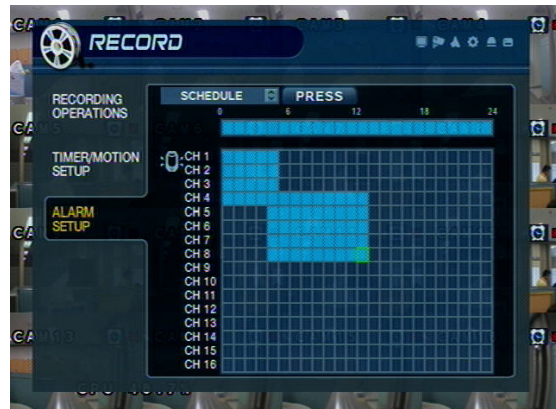
## 3. Alarm Recording Schedule

### 3-1. Parameter



- Select a block of time from the 0–24hr timeline (you may select multiple blocks).
- Press ENTER again to set up the resolution, FPS, quality, and audio on each channel.

### 3-2. Schedule



• Alarm recording icon

- Select an area (channel / time of day) on the schedule.
- Press enter to select (or deselect) alarm recording.

- If 'WEEKLY' recording is enabled, you must set up each day of the week individually.
- If 'DAILY' recording is enabled, you will set up one schedule for every day of the week.



## 5. Setup

### 4. Panic Setup



- To setup each channel, press enter.
- Setup each channel. (Size, FPS, Quality, Audio)
- By using panic button of front panel can record urgently as setup.

## 5. Setup

### Go to Archiving



### 1. CD-RW and USB Back Up

- Device : Indicate CD-RW model and USB memory model automatically.  
If you use the CD-RW and USB memory (or USB HDD) together, it can choose the CD-RW and USB by direction key.
- From : Select start backup time.
- To : Select end backup time.
- Mode : Select backup mode. (Burning / Erasing & Burning)
- A/V channel : Select channel, video, audio for backup.
- Title : Change the title of backup by virtual keyboard.
- Event : Select attach event text file in backup.
- Start : Start backup.



### Tip

- Compatible CD Writer Models are LG(GCE-8526B,GCE-8527B), SAMSUNG(SW-252F, TS-H292A, SH-522C),ASUS(CRW-5232AS),GIGABYTE(GO-R5232B)
- Compatible USB memory stick Models are LG(Royal,mobile,mirror), IMATION(iflash),Memorive PRO+ and Compatible USB HDD is CUTIE(FHD-254).
- Inside of Backup CD,USB Including Necessary Codec for Playback (IMM4 Install File).
- In case of RW Possible CD, Please Delete Previous Data on PC for Recording Again.

# \* HDD Installation

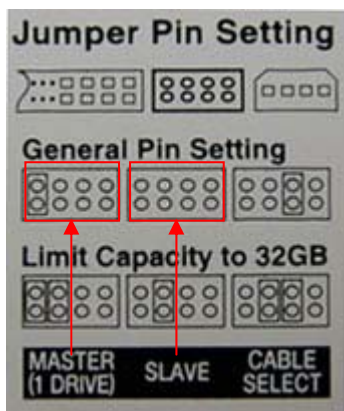
## ① Jumper Setup as Master or Slave



- Jumper Setup as master or Slave, Following the Direction of Surface of Hard Disk.
- Jumper Located at Hard Disk Data Cable or Rear Side of Hard Disk.
- If one hard disk Installation, setup as Master  
If two hard disk Installation, second one setup as slave.

!! When hard disk add or exchange, **Must system off properly (System off by power button)**. If not, it's a cause of fatal hard disk error.!!

## ※ Example of Samsung HDD Jumper Setup



- Refer to general pin setting in jumper pin setting on HDD surface.
- When one HDD install, setup pin as master and connect pin at the left end of jumper.
- When two HDD Install or additional Install, first one setup as master and the other is for slave. slave setup has no pin.
- When more than two HDD install, setup as master or slave to connect one IDE cable at the same method of above.

!!Please use hard disk which possible to supply higher than **UDMA66**.!!

## ② IDE Cable Connection to Main Board



- Confirm the IDE cable inside of product
- Among the three connector, Indicated blue color connector must be connected with main board. other connectors connected with HDD



# INTELLIX USER'S MANUAL



**REMOTE AGENT**  
Revision Date : 2006.10.02.

---

## • INDEX

• CHAPTER 1. Installation	2
• CHAPTER 2. Function introduction	4
• CHAPTER 3. Local setup	5
1. Connect manager	5
2. Add group	6
3. Configuration	9
• CHAPTER 4. DVR setup	10
1. Record	10
2. Camera	11
3. Sound	11
4. Event/sensor	12
5. System	13
• CHAPTER 5. Monitoring	14
1. Selection network ID	14
2. Screen division selection	14
3. PTZ control	15
4. AVI file conversion	16
5. Event viewer	16
• CHAPTER 6. Search	17
1. Function introduction	17
2. Search method	18
3. Search option	19
• CHAPTER 7. Web client	24

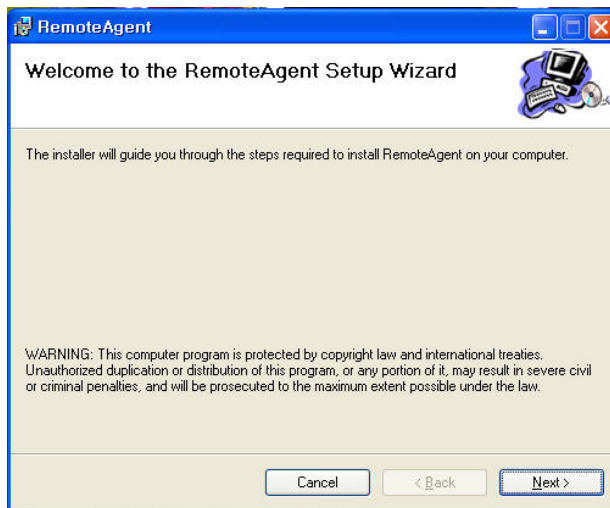
# 1. INSTALLATION

## • System Requirement

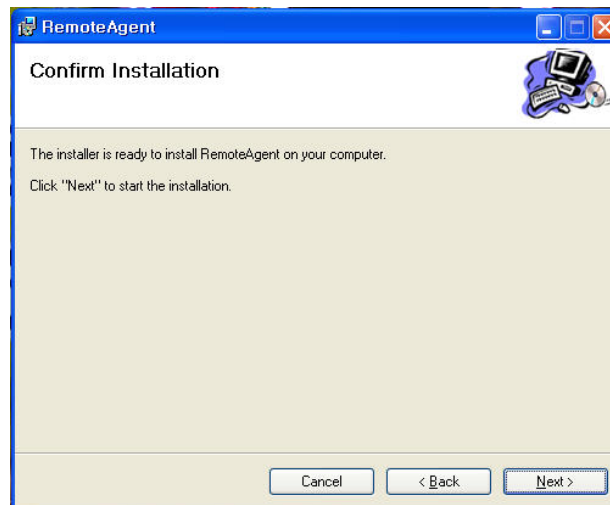
- ① Main Board (CPU): Pentium III @ 500 MHz (minimum), Pentium 4 @ 1GHz or above (recommended)
- ② OS: Windows 2000 Pro (minimum), Windows XP Pro (recommended), DirectX version 9.0c (or higher)
- ③ Memory (System RAM): at least 256MB, 1GB (recommended)
- ④ Video Card: DirectX-supported video card with at least 32MB RAM (minimum), 64MB (recommended)
  - ※ IMM4 Codec Installed (in order to playback archived AVI files within Windows Media Player)[The codec installation files are automatically copied onto all Archived media from the DVR]

## • DVR Remote Agent Install

- ① Open CD-ROM Drive and Run DvrRemoteAgentSetup.exe from the DR-Series Installation CD.



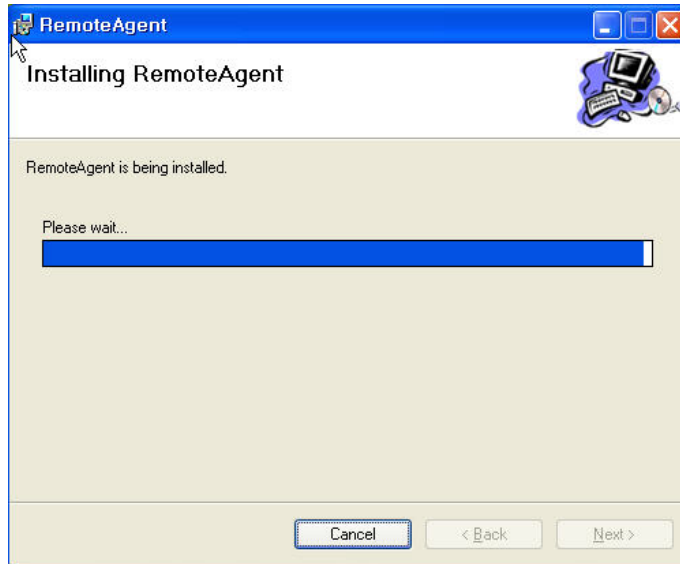
- ② Make sure to close all running program before proceeding with the installation.



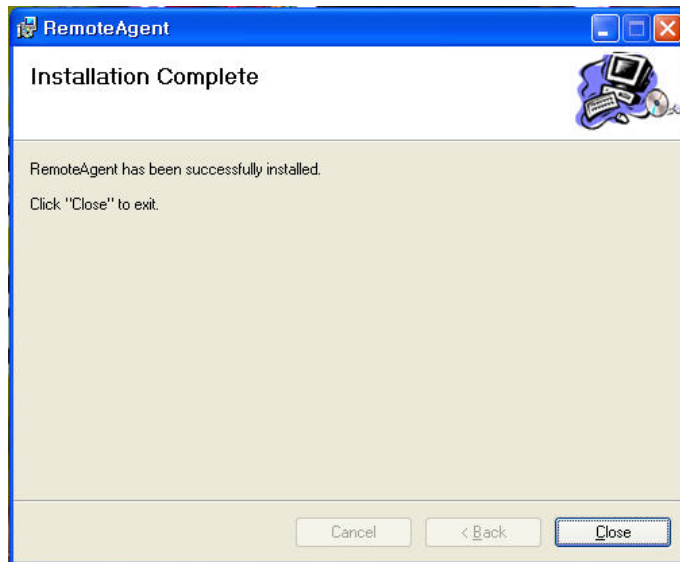
---

# 1. INSTALLATION

③ Shows Progress of Copy of Files.



④ Finish DvrRemoteAgent Program Installation.



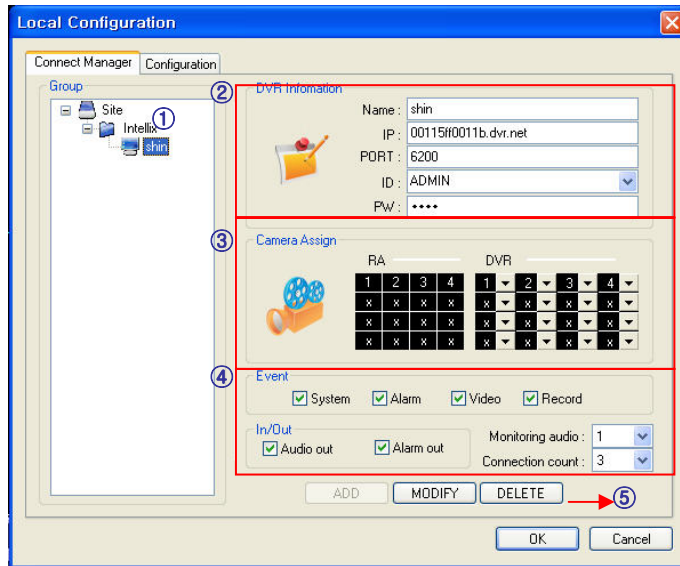
## 2. Function introduction



- ① Main Display : Shows single or multi-channel view of cameras connected to the DVR.
- ② Camera Selection Buttons : Indicates Camera #; click button to display a selected camera.
- ③ Minimize / Exit : Minimize DVR Client Window (to taskbar) or Exit Remote Agent.
- ④ Date/Time Display : Shows current DVR System Date/Time
- ⑤ SEARCH : Enter Search Mode to Search and Playback Recorded Video  
 SETUP : Set up properties of Remote Agent, including the list of DVR units to connect to.  
 CONFIG : Allows Remote Configuration of a connected DVR unit.
- ⑥ DVR Selection : Choose a DVR to connect to with the Remote Agent.
- ⑦ Connect : Connect to selected DVR.  
 Disconnect : Disconnect from selected DVR.
- ⑧ Screen Division Selection : Change Screen Division Mode (1/4/9/16ch view, sequence, full screen)
- ⑨ Begin Saving to AVI file : Begin Saving Live or Playback Images to the local PC in AVI format.
- ⑩ Event Log Viewer : Display Current Event Log & Jump to Event for Playback.
- ⑪ PTZ Control Button : Control Camera Pan, Tilt, Zoom, & Focus (for supported PTZ devices only)
- ⑫ Audio Button and Alarm : Control Bi-Directional Audio, Mute, and Toggle Alarm (On/Off).
- ⑬ Quit : Exit Remote Agent.
- ⑭ Connection Status: Indicates the Network Status of a connected DVR.

# 3. Local setup

## 1. Configuration

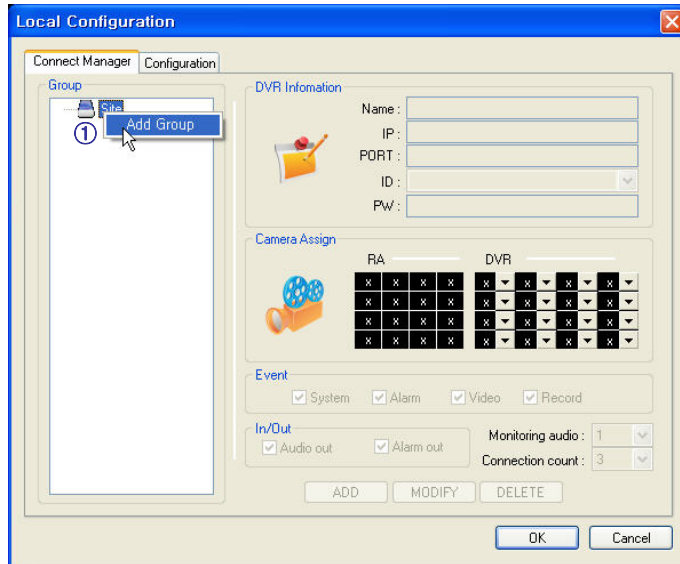


- ① List of DVRs and DVR Groups
- ② DVR Information : Enter DVR Name, IP, Port, User ID, Password
- ③ Camera Position : Set camera positions for multi-channel viewing
- ④ Miscellaneous Options
- ⑤ Add, Modify or Delete DVR or DVR Group

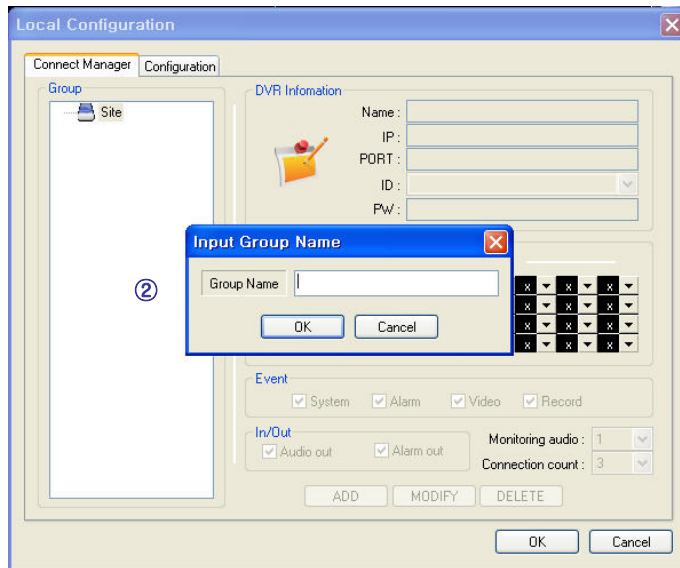


# 3. Local setup

## 2. Add Group

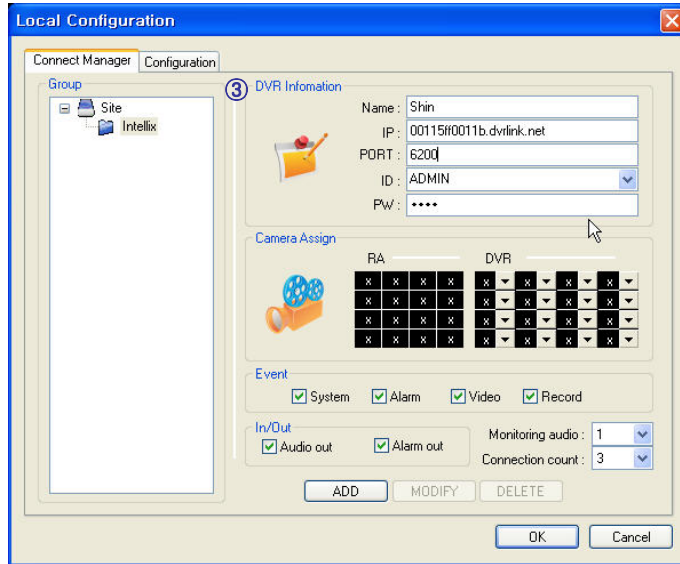


① At 'site' of left upper side, right click the "Add Group".

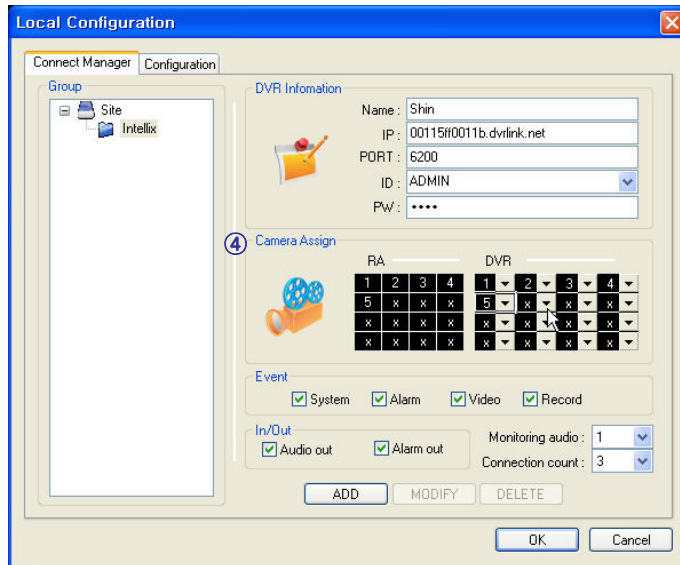


② Input the Group name.

### 3. Local setup

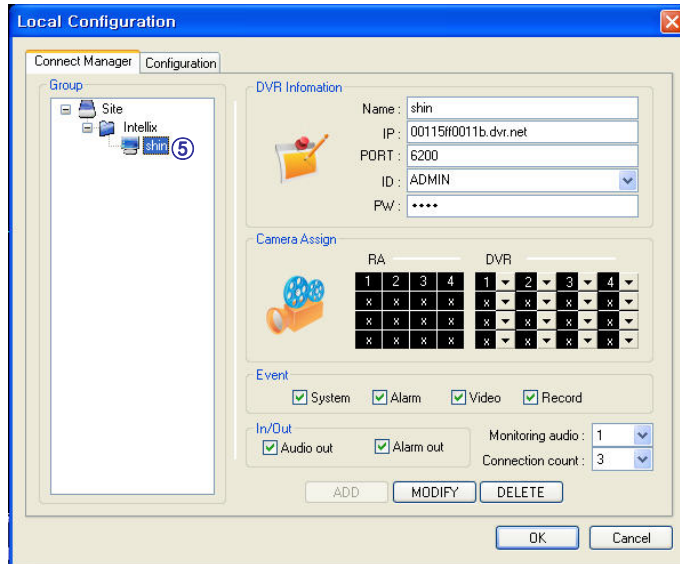


③ Input DVR information.(Name, IP, port, ID, PW)



④ Set camera position, check option and press 'ADD'

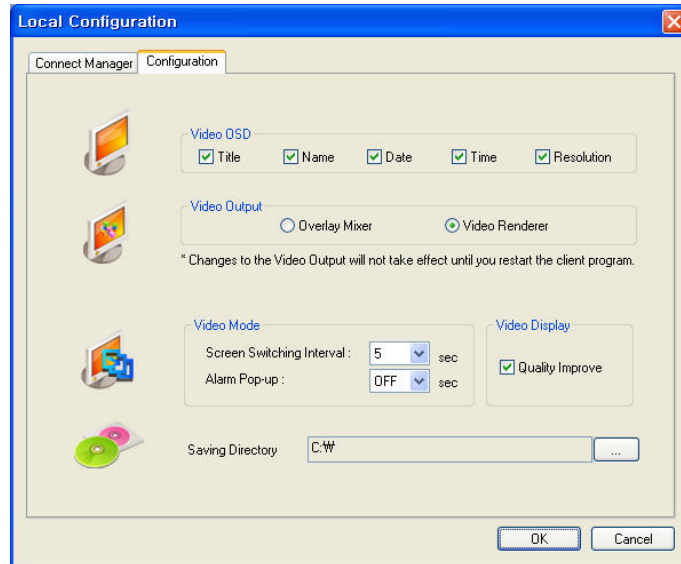
### 3. Local setup



⑤ New DVR list is shown on the left upper side.

## 3. Local setup

### 3. Configuration



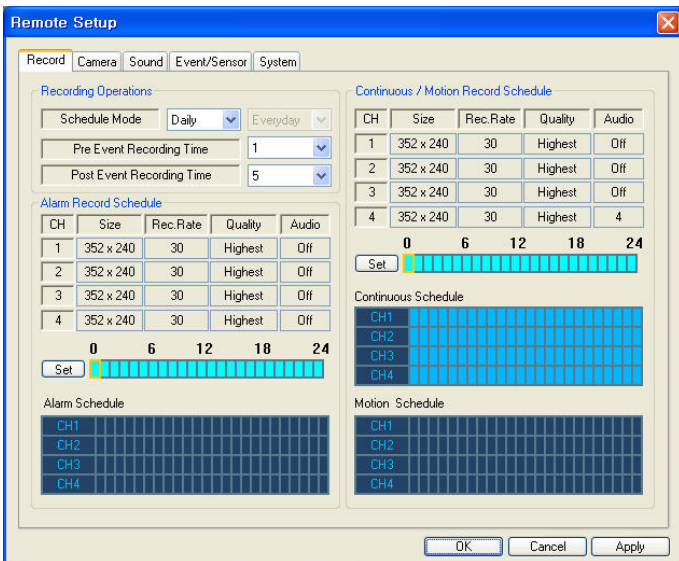
- ① Video OSD : Select screen information. (title, name, date, time)
- ② Video output : Select video output method.
  - Overlay Mixer : Output without passing through CPU.
  - Video Renderer : Output through CPU.
- ③ Video mode
  - Screen switching interval : During the monitoring, select screen rotation interval time(2~300sec.)
  - Alarm pop-up : Pop-up time of alarm happened channel on (2~60sec.) /off.
- ④ Saving Directory : Designate remote PC backup image saving folder.

# 4. DVR setup

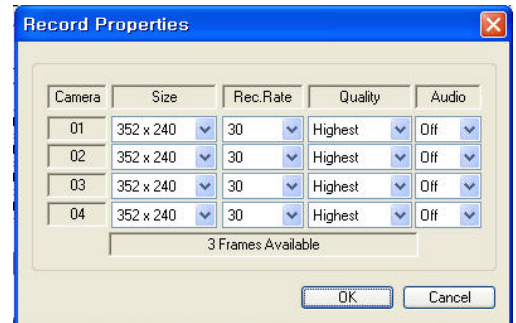
Press  button, select DVR name, and press Select.



Password Input Window Open, then input password.

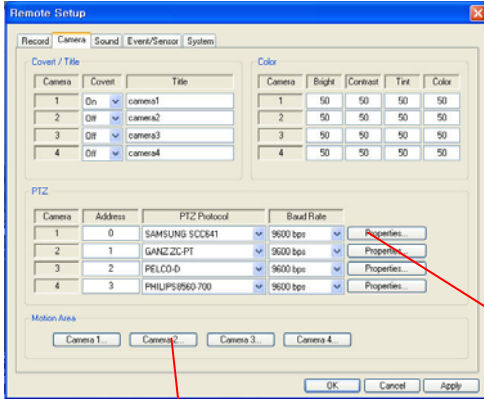


## 1. Record



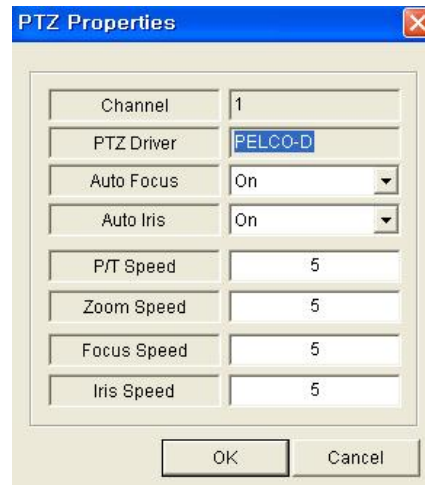
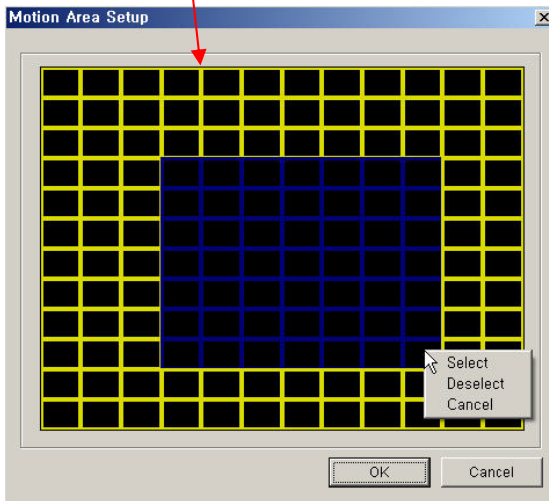
- Record Operations
  - Schedule Mode: Weekly or Daily.  
(When weekly mode, setup each day.)
  - Pre Event Recording Time: When event happen, record image including setting time before event happened.  
(0 ~ 5 Second)
  - Post Event Recording Time: When event happen, record image including setting time after event happened.  
(5 ~ 180Second)
- Alarm Recording Schedule
  - Click the "Set" Button for Alarm Recording.
  - Setup size, rec. rate, quality, audio.
- Continuous/Motion record Schedule
  - Click the "Set" Button for Continuous/Motion record Schedule.
  - Setup size, rec. rate, quality, audio.

## 4. DVR setup



### 2. Camera

- Status/Title Setup
  - Setup for Each Camera (Covert function On/Off, Camera Name).
- Color Setup
  - Setup Color for Each Screen.
- Covert/PTZ Setup
  - Setup for Each Camera PTZ Protocol, Baud rate.



- Motion Area
  - Click the “Camera” Button.
  - Select area by mouse drag, and Choose menu (Select/Deselect/Cancel).

- Click the “Properties” button.
- Setup about PTZ camera.



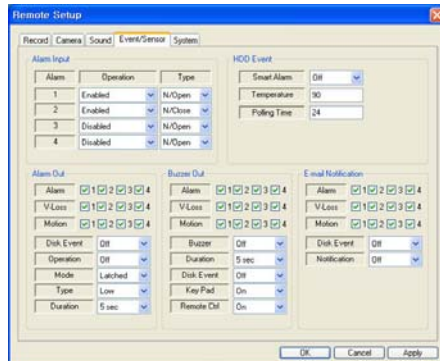
### 3. Sound

- Live Audio Setup
  - Live Audio : On/Off.
  - Audio monitoring channel : Select channel.
  - Network Audio TX : Choose the Audio transmission.
  - Network Audio RX : Choose the Audio receive.



## 4. DVR setup

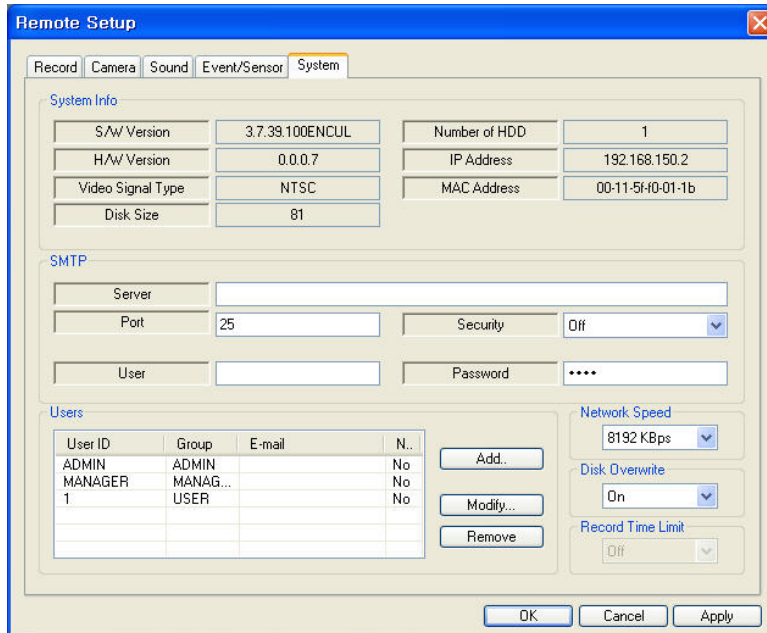
### 4. Event/sensor



- Alarm Input
  - Set the properties for each Alarm Input Connection (Enable/Disable) and Type (N/O, N/C).
- Alarm Out
  - Set the properties for each Alarm Output Connection (activate on Alarm, Video Loss, or Motion Event).
  - HDD Event: Set Alarm Activation (On/Off) for detected HDD Events.
  - Operation: Setup Relay Output Connection with Alarm/Sensor.
  - Mode: Setup Relay Output in Latched or Transparent Mode.
  - Type: Set Relay Type as Normally Open or Normally Closed.
  - Duration: Set Relay Output Time (5 seconds ~ 5 minutes, or until manual reset).
- Buzzer Out
  - Set the properties for the System Buzzer (activate on Alarm, Video Loss, or Motion Event).
  - Buzzer: (On/Off)
  - Duration: Buzzer Time (5 seconds ~ 5 minutes or until manual reset).
  - HDD Event: System Buzzer (On/Off) for detected HDD Events.
  - Keypad : System Buzzer will chirp when a button on the Front Panel is pressed.
  - Remocon: System Buzzer will chirp when a button on the Remote Controller is pressed.
- HDD Event
  - Drive ID: All HDDs are listed by IDE Channel Number
  - Smart Alarm: On/Off
  - Temperature: Set HDD Temperature Alarm (On/Off)
  - Polling Time: Amount of time (hours) between Smart Alarm checks.
- E-mail Notification
  - The DVR will send an e-mail to a list of recipients, based on Alarm, Video Loss, Motion, or HDD Events.
  - HDD Event: Turn E-Mail Notification (On/Off) when HDD Events occur.
  - Notification: Turn E-Mail Notification (On/Off) for all types of events.

## 4. DVR setup

### 5. System



- System Information

- View DVR properties, such as S/W Version, H/W Version, Video Format, HDD Capacity, IP Address, etc.

- SMTP

- Setup the mail server and related properties for outgoing E-Mail Notifications from the DVR.

- Users

- Setup or Modify User Accounts.
  - Click the “Add” or “Modify” button.

- Disk Overwrite

- Set DVR to overwrite when HDD is full (On/Off).

- Network Speed

- Adjust maximum DVR Network throughput (56Kbps ~ 8Mbps).

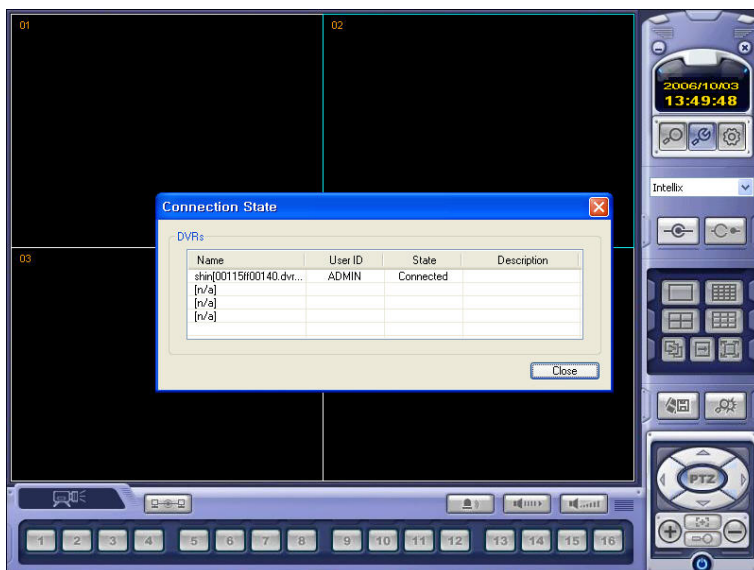


## 5. Monitoring

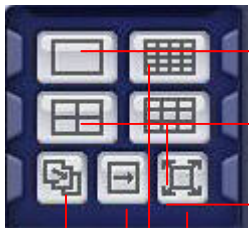
### 1. Selection Network I/D



- Select I/D to Connect Server.
- I/D can be Added, Changed, and Deleted at Setup.



### 2. Screen Division Selection



- Single Channel View : Display the selected channel only.  
(Select a channel using the Camera Selection Buttons)
- 4ch View : 4-Channel (2 x 2) Division Mode
- 9ch View : 9-Channel (3 x 3) Division Mode
- 16ch View : 16-Channel (4 x 4) Division Mode
- Sequence : Single Channel View Mode, with Channel Rotation Sequence
- Manual switch : Show Screen Mode One by One by clicking manually.
- Full Screen View : Present Channel View in Full Screen Mode  
(Double-Click mouse to Return to Previous View)

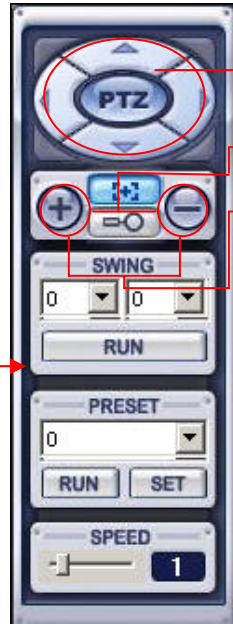
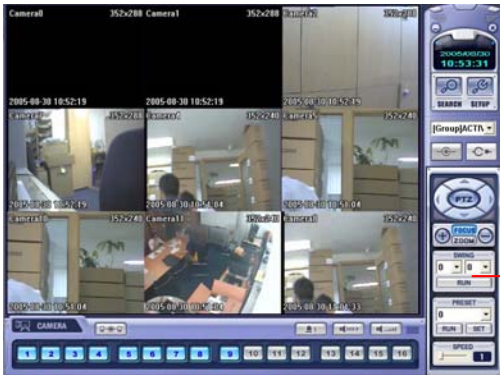
### Tip

- ※ Multi DVR Client
- 4EA DVRs can be controlled by the live view, search the data, backup data and setup about each channel at the same time.

# 5. Monitoring

## 3. P/T/Z Control

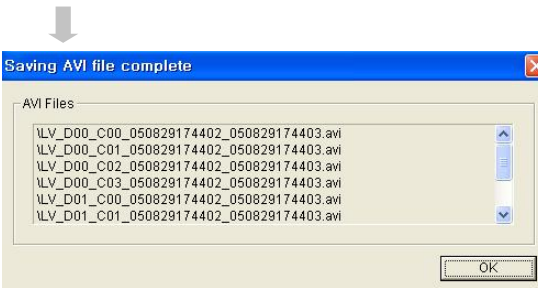
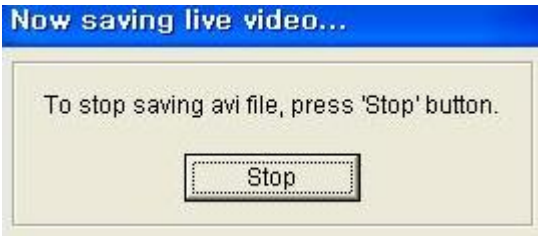
- Press the PTZ Button.



- P/T/Z Controller : Camera P/T/Z Control by Direction Keys
- FOCUS/ZOOM Select Button : Focus or Zoom Control by +,- Button
- +,- Control Button : Focus or Zoom Control

## 5. Monitoring

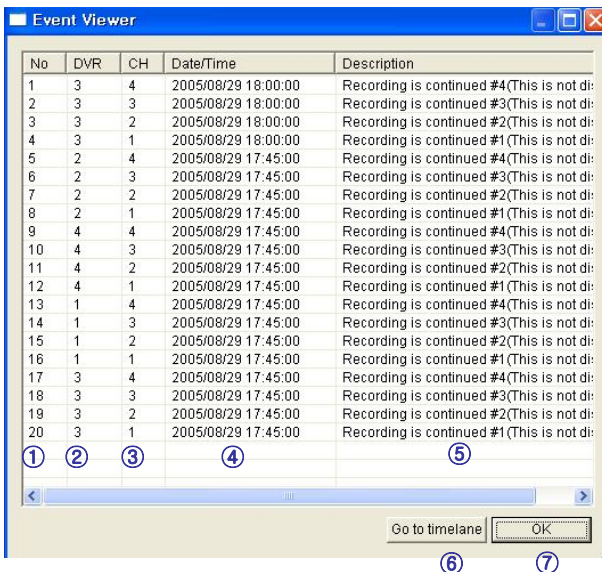
### 4. AVI File Conversion



- Click AVI Conversion Button to Start AVI File Conversion.
- During AVI Conversion Showing a Message and before Click 'Stop' Save AVI File continuously .

- 'Press 'Stop' to Open Designate File Name & Saving Location, and Save AVI File.
- Saved AVI File can Open Ordinary Moving Picture Player or Backup Player.
- Moving Picture Player Codec Version Need Higher than Divx 5.1 & IMM4 Codec.

### 5. Event Viewer



- ① Indicate Event Occurred Order No.
- ② Indicate Event Occurred DVR No.
- ③ Indicate Event Occurred Camera No.
- ④ Indicate Event Occurred Time & Date
- ⑤ Indicate Event Detail Description
- ⑥ After Select Event, Move Search Bar in Search Mode
- ⑦ Return to Search Main to Play Selected Event Image

## 6. Search

### 1. Function Introduction

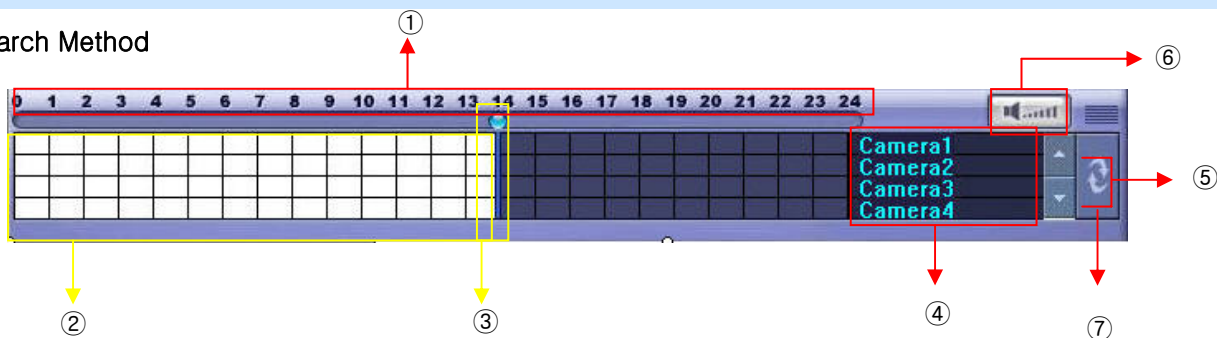


- ① Search Screen : Playing Selected Video.
- ② Search Bar : Search & Indicate Camera Recording Situation by Time Bar .
- ③ LIVE : Return to Watch Mode.  
SETUP : Open Setup to Change Network Setup or Option.
- ④ Screen Division Selection : Change Playing Screen Division Mode .
- ⑤ SEARCH Option : Backup Video or Search Event.
- ⑥ Camera Selection Button : Select Camera at the 1\*1 View .
- ⑦ Quick Search : Find Image to Designate Date & Time.
- ⑧ Search Controller : Control Playing Video.

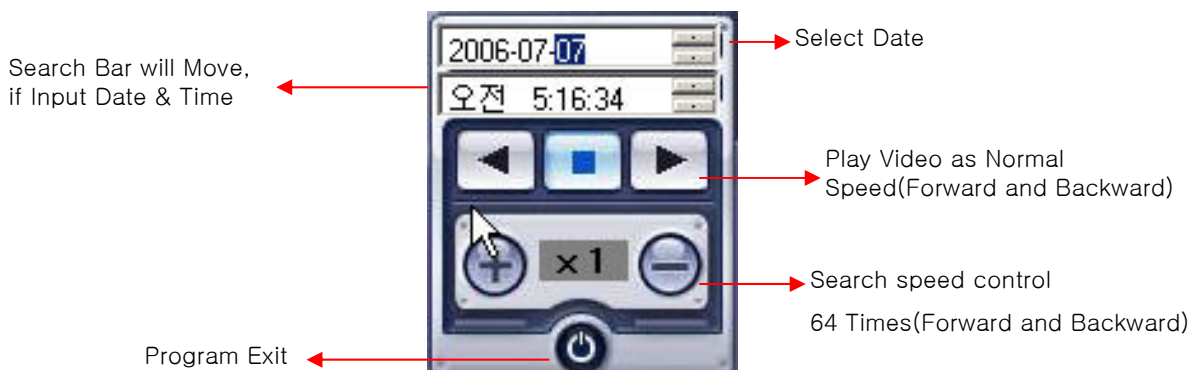


# 6. Search

## 2. Search Method

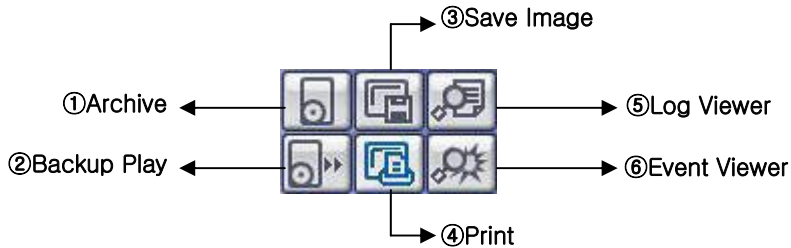


- ① Indicate 0~24 Hour.
- ② Indicate Recording Situation (Grey : No Record, White : Recorded Image at the Time).
- ③ Search Bar : Select Video to Drag Mouse Search Controller in Recorded Area.
- ④ Indicate Camera Channel to Confirm Camera Recording Situation.
- ⑤ If Connected Channel is 5 or More, Another Channel will be Scroll.
- ⑥ Volume : Setup volume.
- ⑦ Refreshment Recording Information Situation Window by Camera Channel.

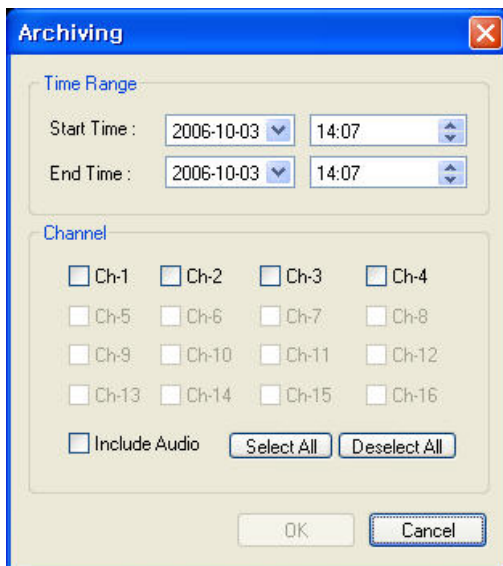


## 6. Search

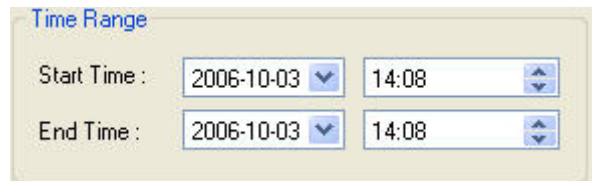
### 3. Search option



① **Archive** – Backup Image from Server to Remote PC.



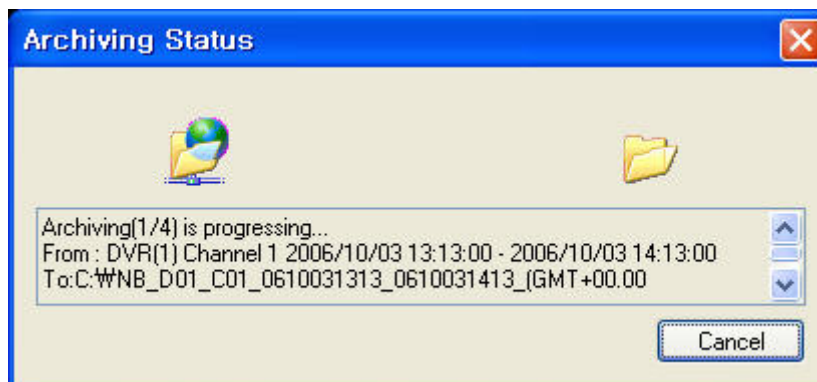
• Time Range



Designate Backup Image Data Length to Input Start Time & End Time.

- Channel : Check Camera Channel for Backup.
- Include Audio : Check Audio Including when Backup.
- Select All  
Deselect All

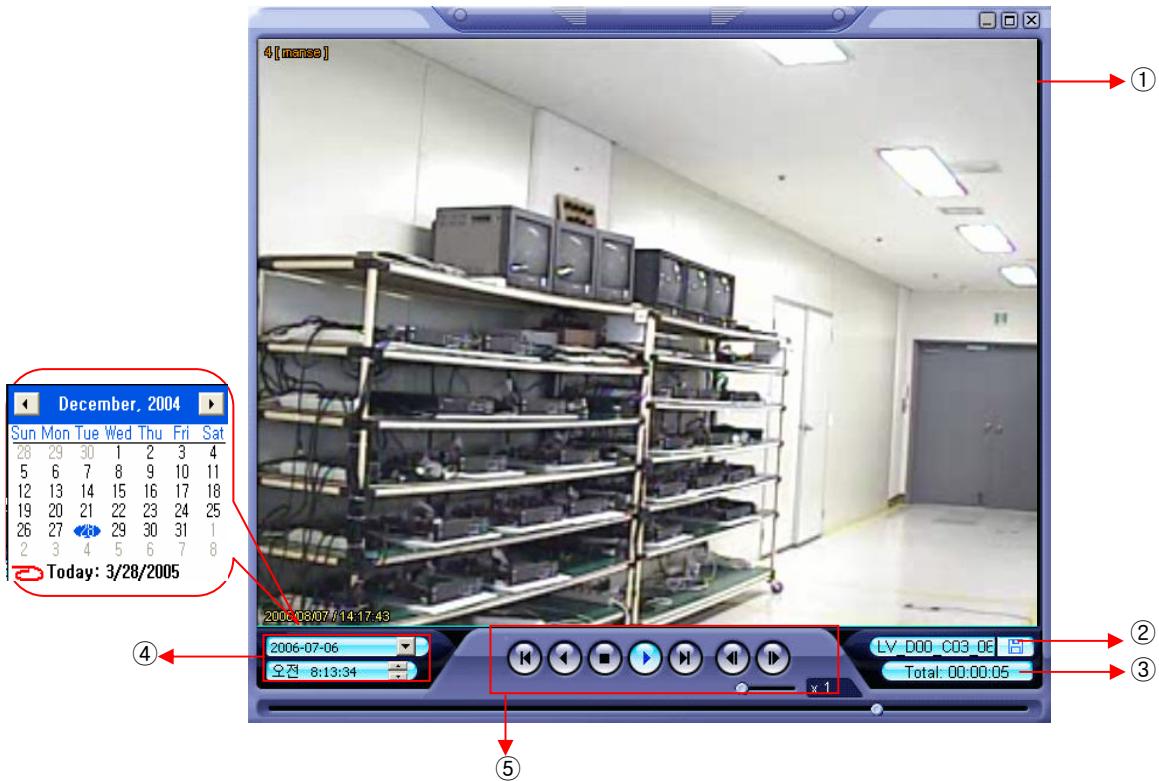
• Press OK to Open Backup Status & Start Backup.



• When Finish Backup, Back Status Window Disappear & Backup Data Save at Hard Disk Root Folder in Remote PC.

## 6. Search

### ② Backup Play (DVR Player) – Transfer to DVR Player



① Video Display (Single-Channel Mode available only)

② Open Backup File for Viewing

③ Indicates Playback Channel

④ Indicates Present Date/Time and Searchable Dates/Times

⑤ Playback Control (Forward and Reverse Play, FF, REW, Frame Forward/Reverse, Stop, Pause, Play Speed)

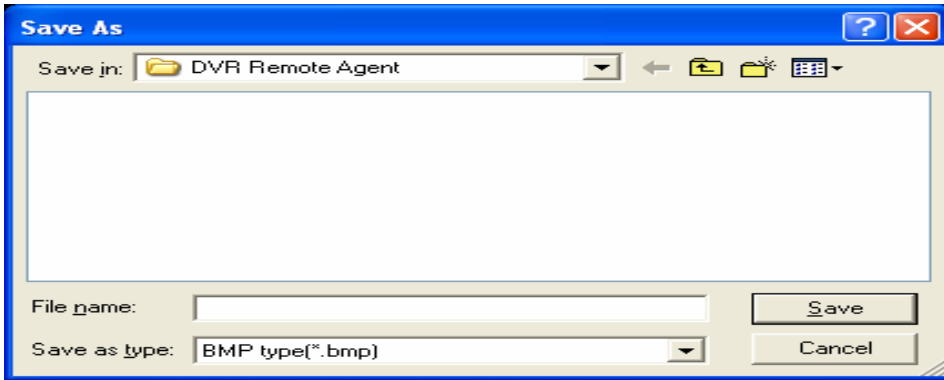
### Tip

- Backup Play Setup in Search Mode is the Same as DVR Player, so it can be Run Independently without Running Remote Program.
- Backup Player & Ordinary Moving Picture Player Possible to Playback, Real Time AVI Backup File can Display as the Same Format.

---

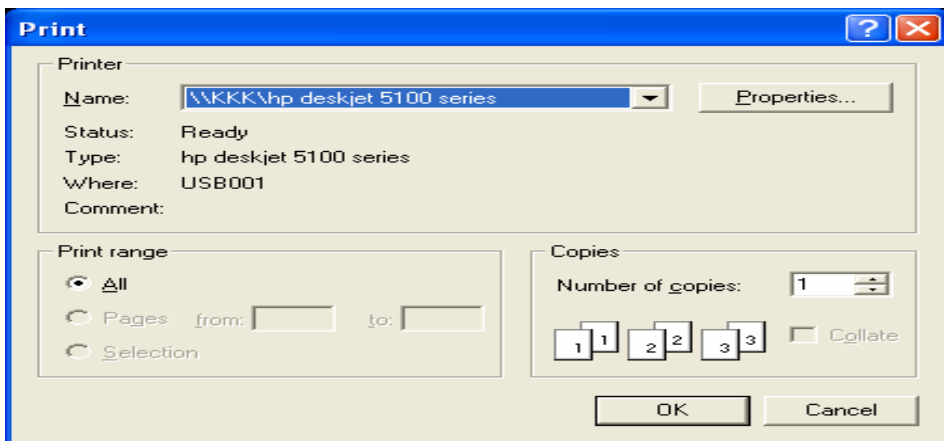
## 6. Search

### ③ Save Image – Capture Image & save to Local PC



- Click 'Save Image' Icon during video playback.
- Chose Filename and File Type (JPG, BMP), and Save Location, and click 'Save'.

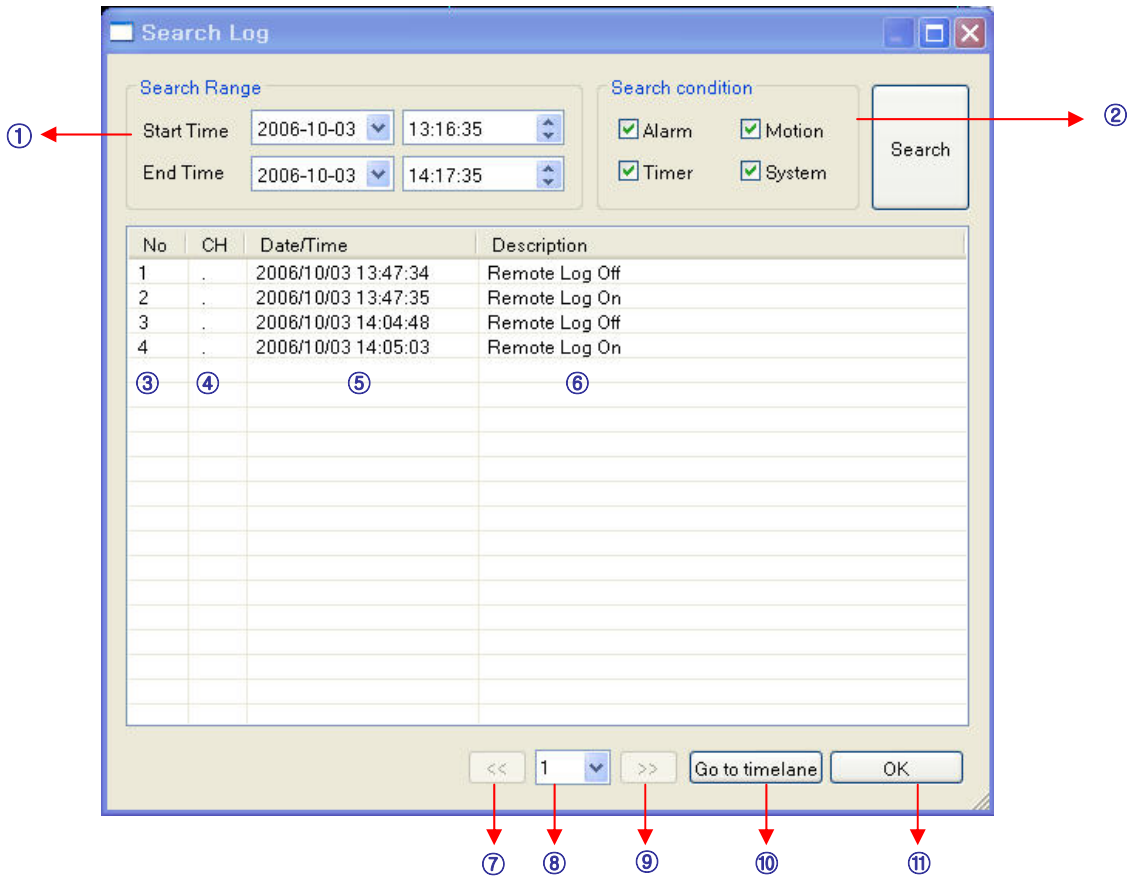
### ④ Print – Present Image Capture and Print Out Image.



- Click 'Print Image' during Video Playback.
- After Selecting Printer, Click 'OK' to start Image Printing

## 6. Search

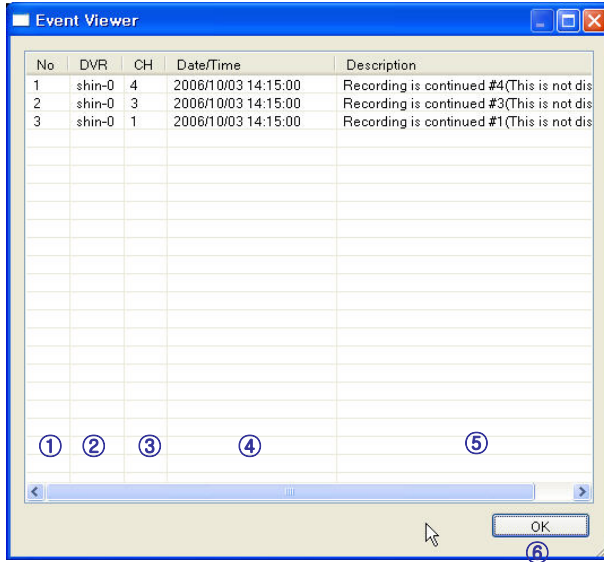
### ⑤ Log Viewer – Find Video from the DVR Event Log.



- ① Select Starting Date/Time and Ending Date/Time from which to search for Event Log events.  
– Press Search Button to Search and View Search Results.
- ② Choose the DVR to Search.
- ③ Indicates the order in which events in the Event Log occurred.
- ④ Indicates the Camera # on which the event occurred.
- ⑤ Indicates the Date/Time when the event occurred.
- ⑥ Description of the event.
- ⑦ Move to Previous Page of Search results.
- ⑧ Move to Next Page of Search results.
- ⑨ Select a page of Search results to view.
- ⑩ Go to Selected Event on the Search Timeline.
- ⑪ Return to Search Window.

## 6. Search

⑥ **Event Viewer**– Shows Present Event in Server & Find Image



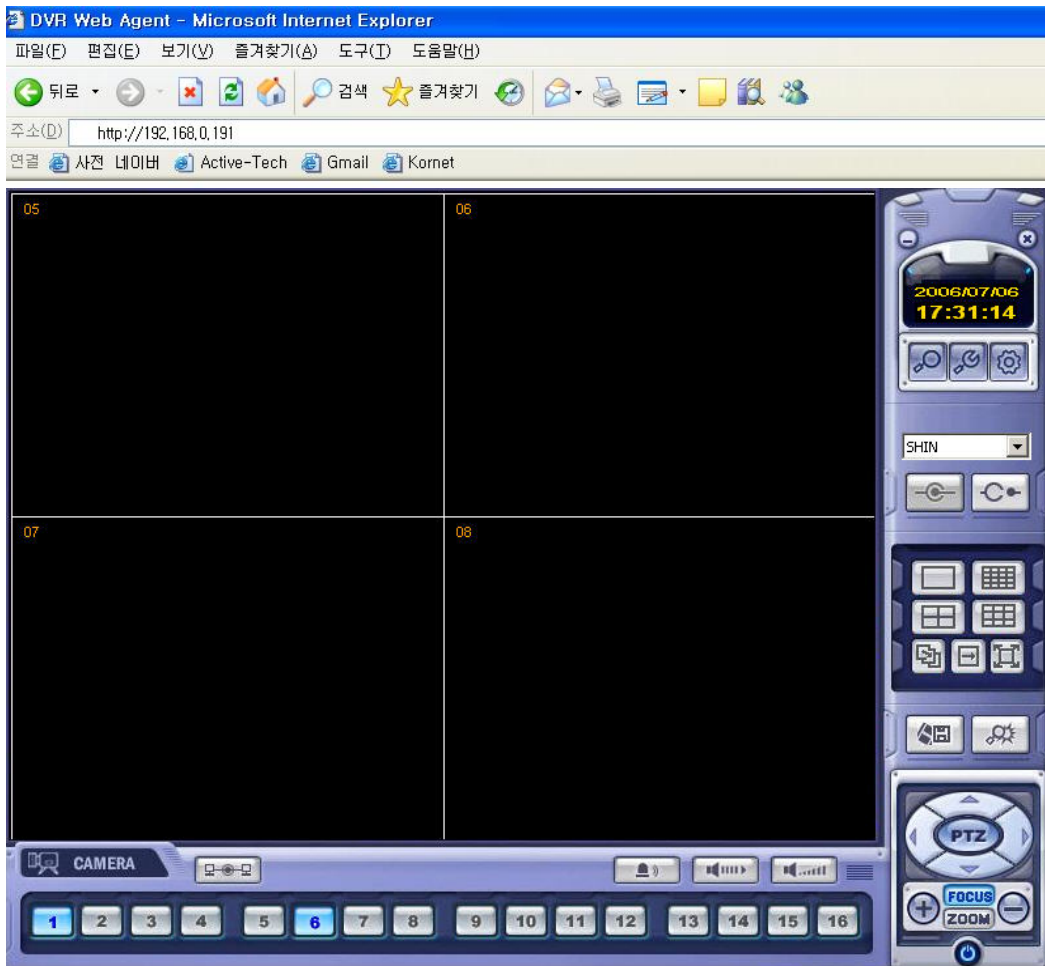
- ① Indicates the order in which events occurred.
- ② Indicates the DVR # on which an event occurred.
- ③ Indicates the Camera # on which an event occurred.
- ④ The Date/Time during which the event occurred.
- ⑤ Description of event.
- ⑥ Go to Selected Event on the Search Timeline.
- ⑦ Return to Search Window.



## 7. Web client

### • WEB Client Connection

- ① Input the IP Address or URL of the DVR in the Internet Explorer Address Bar.
- ② A dialog will appear to confirm download of an ActiveX control. Please click 'Confirm' or 'Continue'.



- ③ Web Client Window will appear in Internet Explorer.
- ④ All functions are the same as within the Remote Agent software.

# 7. Web client

